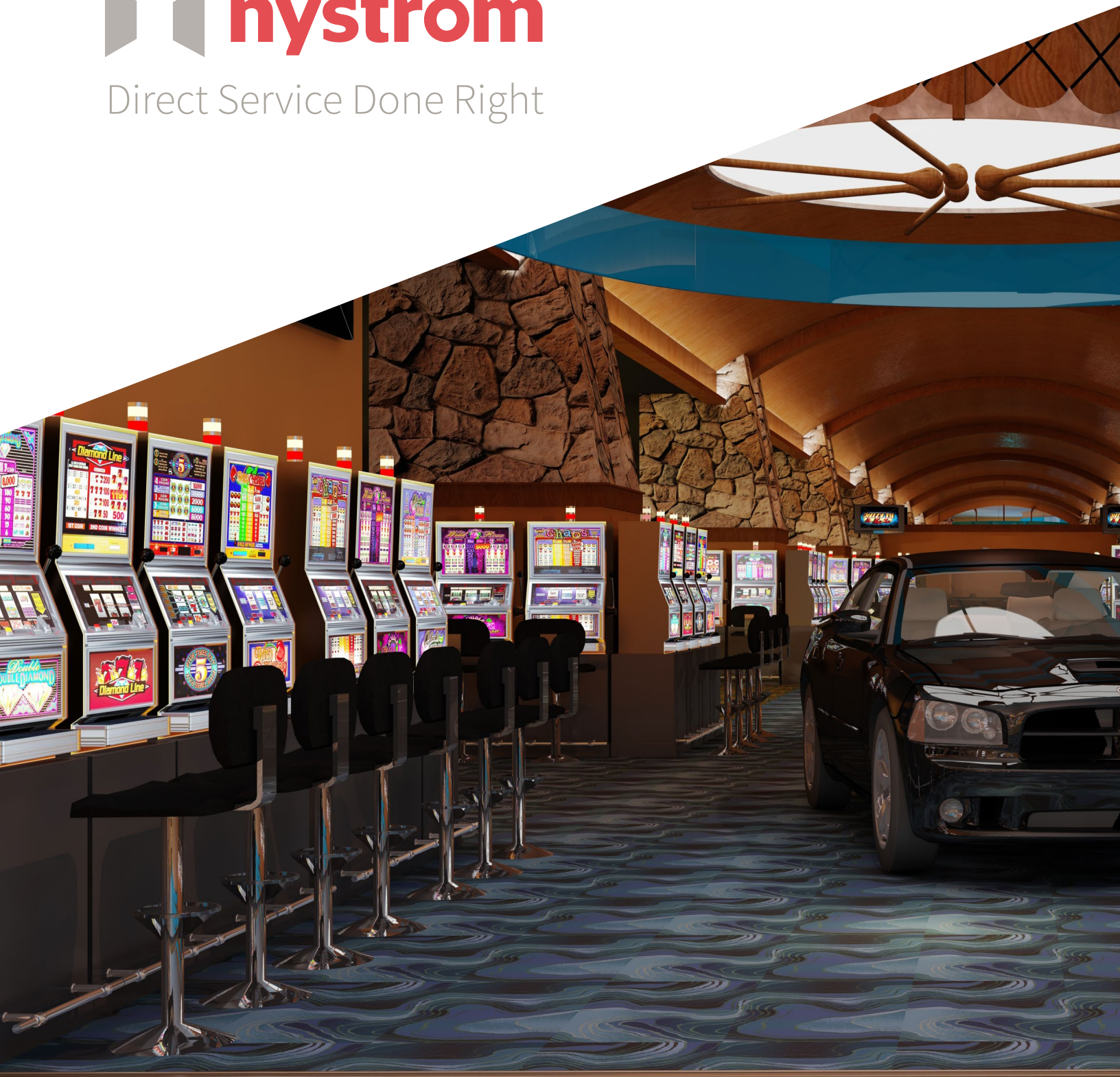




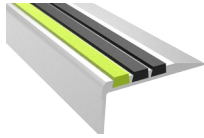
Direct Service Done Right



07 9513 + 07 9516  
Expansion Joint Systems  
Catalog

DIV  
5

**STAIR TREADS + NOSINGS**  
05 5000



**FALL PROTECTION**  
05 5213 / 07 7200



**ENTRANCE MATS + FRAMES**  
**ENTRANCE FLOOR GRILLES**  
12 4813 + 12 4816

DIV  
12



DIV  
7

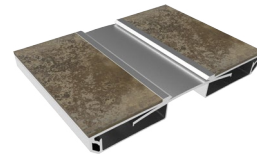
**ROOF HATCHES**  
07 7200



**SMOKE VENTS**  
07 7200



**PREFORMED JOINT SEALS +  
EXPANSION JOINT SYSTEMS**  
07 9100 + 07 9513

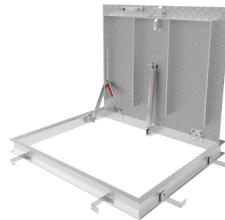


DIV  
8

**ACCESS DOORS**  
08 3100



**FLOOR DOORS**  
08 3483

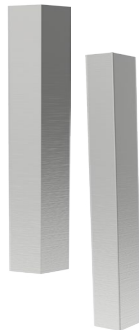


For over 50 years Nystrom has been the go to manufacturer for specialty building products.

Today we provide a wide range of floor, roof and safety related access products that help create safer, more accessible buildings.

DIV  
10

**WALL + DOOR PROTECTION**  
10 2600



**FIRE PROTECTION CABINET  
+ FIRE EXTINGUISHERS**  
10 4413 + 10 4416





DIVISION 07 9513

## Expansion Joint Systems

### FLOOR SYSTEMS 5-20

Architectural Metals	5-9
Elastomeric Seals	10-20

### WALL & CEILING SYSTEMS 21-34

Architectural Metals	21
Elastomeric Seals	22-34

### ROOF SYSTEMS 35-38

Bellows	35-36
Architectural Metals	37-38

### PARKING STRUCTURES & STADIUMS 39-42

Architectural Metals	39-42
----------------------	-------

### FIRE BARRIER SYSTEMS 43-45

Seismic Fire Barriers	43-44
Compressions	45

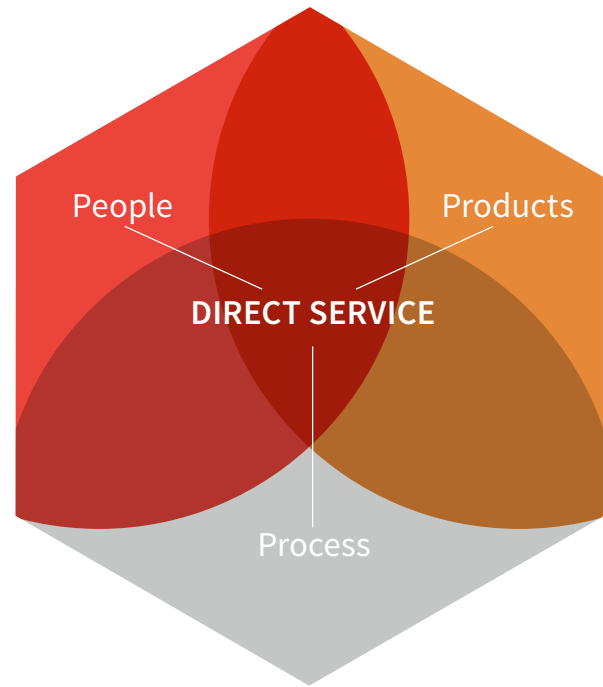
## Options 46

Material	46
Seal Colors	46
Moisture Barrier	46

# Direct Service Done Right

Nystrom offers a broad line of specialty building products to better serve construction professionals and architects.

We have customer focused professionals and hassle-free processes that directly serve and simplify the building process.



## PEOPLE

architects, engineers, designers, estimators, construction professionals, and service specialists

## PROCESS

estimating & bid design support, tech support, logistics support, installation support, cad, revit/bim

## PRODUCTS

standard & custom designs, warehousing, quality assurance, exceptional warranties, lead certification, labeling & tagging

## TIME

## EFFICIENCY

## SERVICE



## SPECIFICATION SUPPORT

By giving architects, designers and contractors open access to our expert team, we simplify the process of specifying and procuring access products from design through delivery and installation.



# Wing Infill

## FLOORING SYSTEM (SA/DA)

Nystrom's Single Wing and Double Wing Flooring Infill System is designed to cover thermal expansion joint openings. Constructed of aluminum and designed to integrate with carpet, tile and VCT flooring, this system provides a minimal 1.5 inch sight line.

### FEATURES

**COORDINATE WITH FLOORING** Seamless integration with existing VCT, carpet and tile flooring.

**DOUBLE WING OPTION** Add a double sight line to coordinate with a matching wall system.

**ADA COMPLIANT** This system is not a trip hazard as the no bump design provides a finished flush floor transition.

### DETAILS

**MATERIAL** 6063-T6 Aluminum

**FINISH** Mill

**MOVEMENT**

- Thermal: Horizontal

**MOUNTING** Surface

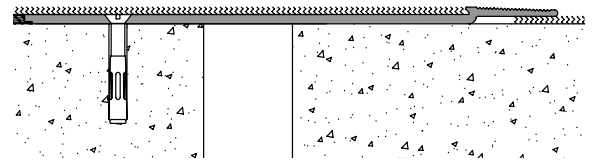
**JOINT SIZE** 2 inches

**LENGTH** 10 Linear Feet

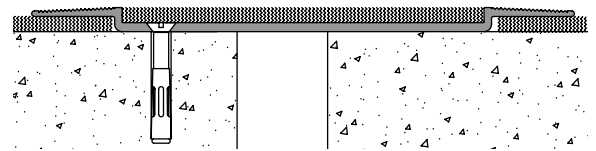
**LOAD** Pedestrian and Light Cart

**INSTALLATION** Floor

**OPTIONS** Moisture Barrier, Fire Barrier



Single Wing Floor-to-Floor



Double Wing Floor-to-Floor

### MODELS

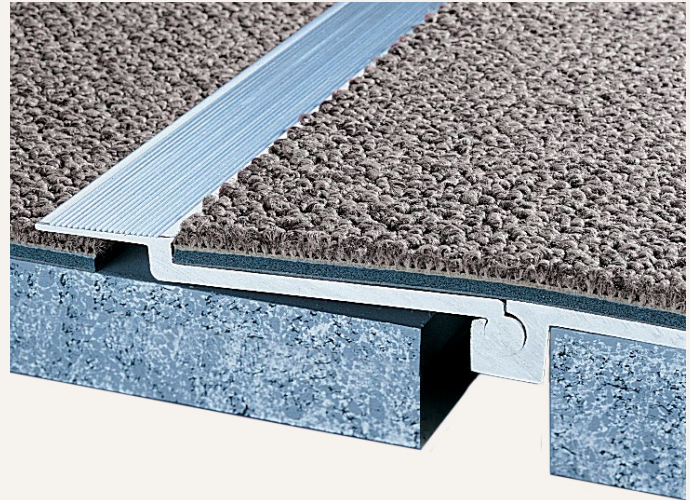
SINGLE WING				
MODEL	JOINT SIZE AT MEAN T°F	EXPOSED SIGHT-LINE	FLOOR INFILL HEIGHT	MOVEMENT
SA150-125	2" (51mm)	1.5" (38mm)	0.125" (3mm)	1" (25mm)
SA150-250	2" (51mm)	1.5" (38mm)	0.25" (6mm)	1" (25mm)
SA150-375	2" (51mm)	1.5" (38mm)	0.375" (10mm)	1" (25mm)

DOUBLE WING				
MODEL	JOINT SIZE AT MEAN T°F	EXPOSED SIGHT-LINE	FLOOR INFILL HEIGHT	MOVEMENT
DA150-125	2" (50mm)	4" (101mm)	0.125" (3mm)	1" (25mm)
DA150-250	2" (50mm)	4" (101mm)	0.25" (6mm)	1" (25mm)
DA150-375	2" (50mm)	4" (101mm)	0.375" (10mm)	1" (25mm)

# Single Wing Hinged

## FLOORING INFILL SYSTEM (FA)

The Single Wing Hinged Flooring Infill System is designed with a hinged cover to accommodate horizontal and vertical thermal movement. This surface mounted system is designed to integrate with carpet and VCT flooring and provides a minimal sight line.



### FEATURES

**HINGED DESIGN** Constructed with a single wing, hinged design to allow for limited vertical movement.

**INTEGRATED FLOORING** Designed to coordinate with main flooring material and accepts floor infill.

**SURFACE MOUNT** No block out is required. Simply screw onto subfloor.

### DETAILS

**MATERIAL** 6063-T6 Aluminum

**FINISH** Mill

#### MOVEMENT

- Thermal: Horizontal and Vertical

**MOUNTING** Surface

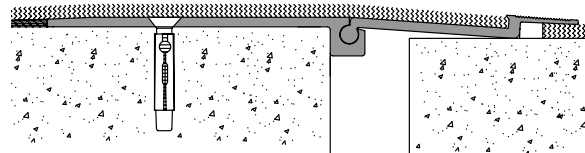
**JOINT SIZE** 3 inches

**LENGTH** 10 Linear Feet

**LOAD** Pedestrian and Light Cart

**INSTALLATION** Floor

**OPTIONS** Moisture Barrier, Fire Barrier

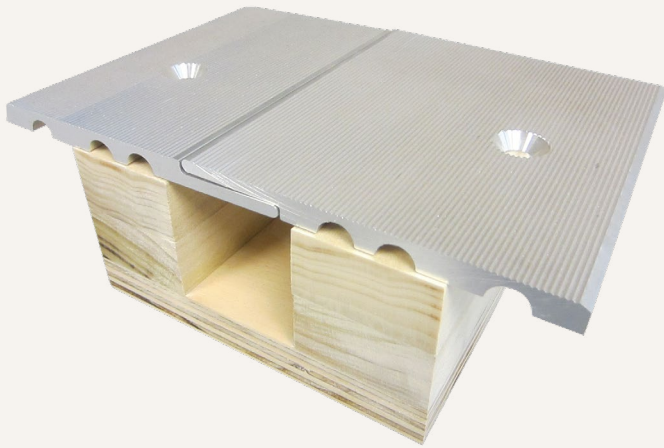


### MODELS

MODEL	JOINT SIZE AT MEAN T°F	EXPOSED SIGHT-LINE	FLOOR INFILL HEIGHT	MOVEMENT
FA150-125	3" (75mm)	1.5" (38mm)	0.125" (3mm)	1" (25mm)
FA150-250	3" (75mm)	1.5" (38mm)	0.25" (6mm)	1" (25mm)
FA150-375	3" (75mm)	1.5" (38mm)	0.375" (10mm)	1" (25mm)

# Architectural Aluminum

## FLOORING SYSTEM (RA)



The Architectural Aluminum Flooring System, with dual mounting, allows for flush mounting next to tile or carpeting. The overlap covers joint opening when movement occurs. The exposed cover plate is manufactured with continuous serrations providing an anti-slip surface to reduce trips, slips and falls.

### FEATURES

**ANTI-SLIP SURFACE** Designed with serrations to create an anti-slip surface.

**SURFACE MOUNT** No block out is required - simply screw onto the existing subfloor.

**ARCHITECTURAL METAL** The entire system of metal is exposed for architectural aesthetics. The neighboring flooring infill simply butts against the system.

### DETAILS

**MATERIAL** 6063-T6 Aluminum

**FINISH** Mill

#### MOVEMENT

- Thermal: Vertical

**MOUNTING** Surface

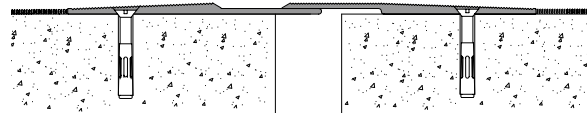
**JOINT SIZE** 1 inch

**LENGTH** 10 Linear Feet

**LOAD** Pedestrian and Light Cart

**INSTALLATION** Floor

**OPTIONS** Moisture Barrier, Fire Barrier



### MODELS

MODEL	JOINT SIZE AT MEAN T°F	EXPOSED SIGHT-LINE	FLOOR INFILL HEIGHT	MOVEMENT
RA125	1" (25mm)	9.25" (235mm)	0.125" (3mm)	.75" (20mm)
RA375	1" (25mm)	8.5" (212mm)	0.375" (10mm)	.75" (20mm)

# Architectural Aluminum Anti-Slip

## FLOORING SYSTEM (DT)

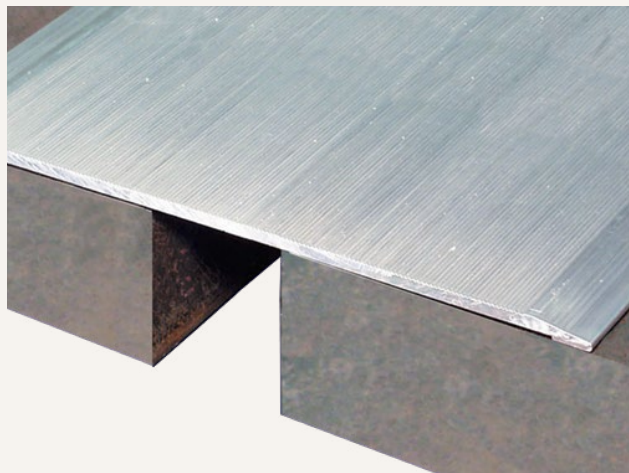
The Nystrom DT Anti-Slip interior cover system is capable of thermal or multi-directional movement. Easily installs on the surface of the floor directly to the substrate without the requirement of preformed block outs.

### FEATURES

**ANTI-SLIP SURFACE** Designed with serrations to create an anti-slip surface.

**EASY INSTALLATION** Surface mount - no block out required. Simply attach to subfloor with appropriate fasteners.

**OPTIONAL FIRE BARRIER** Add an optional fire barrier to install under the cover plate. See pages 43-45 for options.



### DETAILS

**MATERIAL** 6063-T6 Aluminum

**FINISH** Mill

#### MOVEMENT

- Thermal: Horizontal

**MOUNTING** Surface

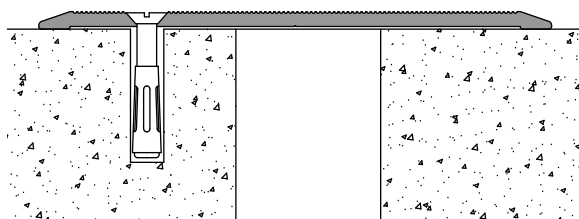
**JOINT SIZE** 1 inch to 6 inches

**LENGTH** 10 Linear Feet

**LOAD** Pedestrian and Light Cart

**INSTALLATION** Floor

**OPTIONS** Moisture Barrier, Fire Barrier



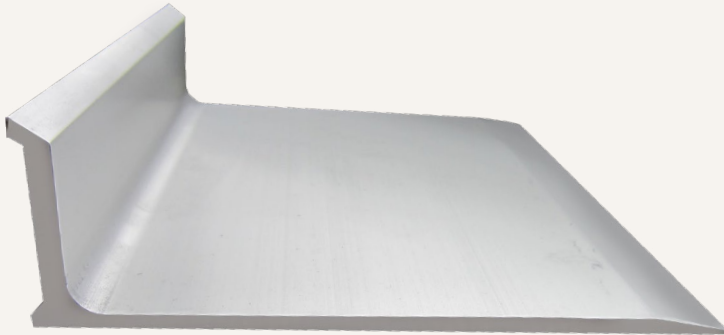
### MODELS

MODEL	JOINT SIZE AT MEAN T°F	SYSTEM WIDTH	TOTAL MOVEMENT
DT-100	1" (25mm)	4" (100mm)	1.65" (42mm)
DT-200	2" (51mm)	6" (150mm)	2.9" (74mm)
DT-300	3" (76mm)	8.5" (216mm)	5.65" (144mm)
DT-400	4" (102mm)	10" (250mm)	6.65" (169mm)
DT-600	6" (150mm)	11.5" (292mm)	8.65" (220mm)



# Architectural Aluminum

## CORNER SYSTEM (SW)



The Architectural Aluminum Corner System is designed to give an aesthetically pleasing cover plate around the Corner of the floor to wall corner.

### FEATURES

**SURFACE MOUNT** No block out is required. Simply attach to back wall with appropriate fasteners.

**STYLISH APPEARANCE** Complementary addition to your Corner floor-to-wall covering.

**OPTIONAL MOISTURE BARRIER** Add an optional moisture barrier under the cover plate. See page 46 for moisture barrier options.

### DETAILS

**MATERIAL** 6063-T6 Aluminum

**FINISH** Clear Anodized

#### MOVEMENT

- Thermal: Horizontal

**MOUNTING** Surface

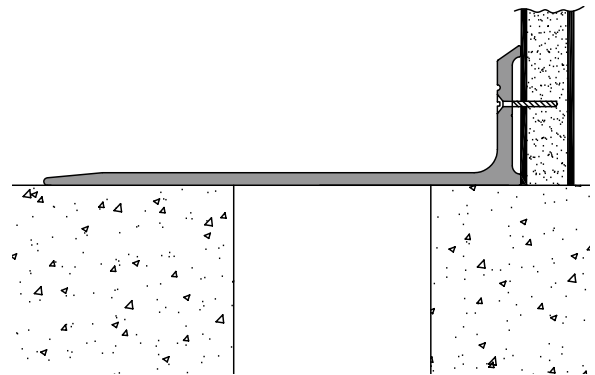
**JOINT SIZE** 1 inch to 3 inches

**LENGTH** 10 Linear Feet

**LOAD** Pedestrian and Light Cart

**INSTALLATION** Floor

**OPTIONS** Moisture Barrier, Fire Barrier



### MODELS

MODEL	JOINT SIZE AT MEAN T°F	SYSTEM WIDTH	TOTAL MOVEMENT
SW-300	1" - 3" (25-76mm)	5" (125mm)	1" - 3" (25-76mm)

# Elastomeric

## FLOORING SYSTEM (LCF/W)

This Elastomeric System is built to last. The system's extruded aluminum base is installed in a concrete block out channel and backfilled in. Integrated into the system is a colored rubber seal that expands and compresses with horizontal movement.



### FEATURES

**COORDINATING CORNERS** Available with corner option for a complete floor solution.

**CONTINUOUS SIGHT LINE** Available with coordinating wall and ceiling systems to provide an aesthetically pleasing appearance.

**COMPLEMENTARY SEAL COLORS** Available in four elastomeric seal color options: beige, white, gray or black.

### DETAILS

**MATERIAL** 6063-T6 Aluminum

**FINISH** Mill and Rubber Seal

#### MOVEMENT

- Thermal: Horizontal

**MOUNTING** Block Out or Surface

**JOINT SIZE** 1 inch or 2 inches

**LENGTH** 10 Linear Feet

**LOAD** Pedestrian and Light Cart

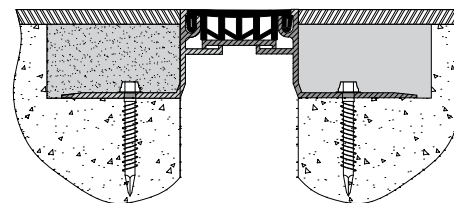
**INSTALLATION** Floor

**OPTIONS** Seal Color, Moisture Barrier, Fire Barrier

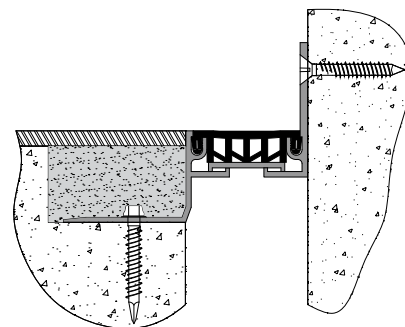
### MODELS

MODEL	INSTALLATION	JOINT SIZE AT MEAN T°F	SYSTEM WIDTH	TOTAL MOVEMENT
LCF-100	Floor-to-Floor	1" (25mm)	1.5" (40mm)	.5" (12mm)
LCF-100W	Floor-to-Wall	1" (25mm)	2" (50mm)	.5" (12mm)
LCF-200	Floor-to-Floor	2" (50mm)	2" (50mm)	1" (25mm)
LCF-200W	Floor-to-Wall	2" (50mm)	3" (75mm)	1" (25mm)

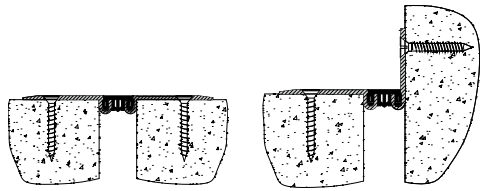
### SEAL COLORS



Floor-to-Floor



Floor-to-Wall/Corner



Floor-to-Floor

Floor-to-Wall/Corner

**DETAILS**

**MOUNTING** Surface

**PRODUCT SPECIFICATIONS** Refer to page 10

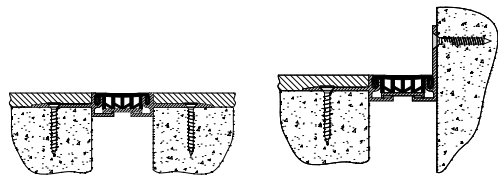
# Elastomeric System

## TOP MOUNT APPLICATION (LCFS/W)

The Top Mount System is designed for mounting directly over the expansion joint on top of the flooring material. The beveled edge provides smooth transition walking surface.

**MODELS**

MODEL	INSTALLATION	JOINT SIZE AT MEAN T°F	SYSTEM WIDTH	TOTAL MOVEMENT
LCFS-100	Floor-to-Floor	1" (25mm)	5" (127mm)	0.5" (13mm)
LCFS-100W	Floor-to-Wall	1" (25mm)	2.75" (70mm)	0.5" (13mm)
LCFS-200	Floor-to-Floor	2" (51mm)	6" (152mm)	1" (25mm)
LCFS-200W	Floor-to-Wall	2" (51mm)	3.78" (96mm)	1" (25mm)



Floor-to-Floor

Floor-to-Wall/Corner

**DETAILS**

**MOUNTING** Surface

**PRODUCT SPECIFICATIONS** Refer to page 10

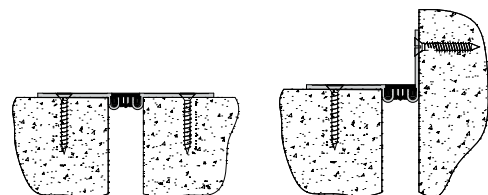
# Elastomeric System

## FLOORING INFILL APPLICATION (LCFC/W)

Nystrom's Flooring Infill Elastomeric Expansion Joint System is a surface mounted system that is designed for mounting directly over the expansion joint and receives flooring on top of the installed assembly.

**MODELS**

MODEL	INSTALLATION	JOINT SIZE AT MEAN T°F	SYSTEM WIDTH	TOTAL MOVEMENT
LCFC-100	Floor-to-Floor	1" (25mm)	1" (25mm)	0.5" (13mm)
LCFC-100W	Floor-to-Wall	1" (25mm)	1" (25mm)	0.5" (13mm)
LCFC-200	Floor-to-Floor	2" (51mm)	2" (51mm)	1" (25mm)
LCFC-200W	Floor-to-Wall	2" (51mm)	2" (51mm)	1" (25mm)



Floor-to-Floor

Floor-to-Wall/Corner

**DETAILS**

**MOUNTING** Surface

**PRODUCT SPECIFICATIONS** Refer to page 10

# Elastomeric System

## TILE APPLICATION (LCFT/W)

This system is designed to be mounted directly over the joint openings for tile applications. The flooring mounts flush to the edge of the assembly.

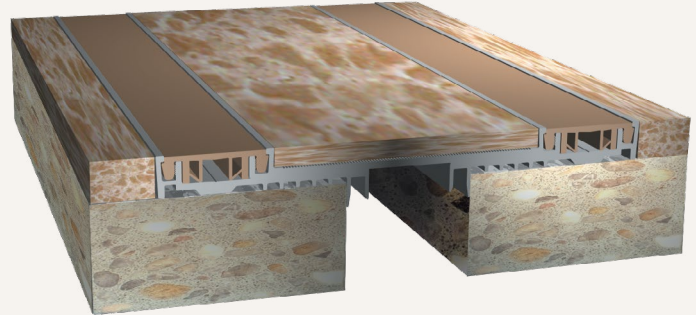
**MODELS**

MODEL	INSTALLATION	JOINT SIZE AT MEAN T°F	SYSTEM WIDTH	TOTAL MOVEMENT
LCFT-100	Floor-to-Floor	1" (25mm)	5" (127mm)	0.5" (13mm)
LCFT-100W	Floor-to-Wall	1" (25mm)	2.78" (71mm)	0.5" (13mm)
LCFT-200	Floor-to-Floor	2" (51mm)	6" (152mm)	1" (25mm)
LCFT-200W	Floor-to-Wall	2" (51mm)	3.78" (96mm)	1" (25mm)

# Elastomeric

## TWIN SEAL SYSTEM (TMM/W)

This basic Elastomeric Twin Seal System offers two rubber seals to allow for more thermal joint movement. Designed for use on floors and walls, the aluminum slide plate accepts flooring or wall infill to seamlessly coordinate with the surrounding environment.



### FEATURES

**COORDINATING CORNERS** Available with corner option for a complete floor and wall solution.

**COORDINATION** Designed for both horizontal and vertical applications, this system provides a continuous coordinated look and feel.

**COMPLEMENTARY SEAL COLORS** Available in four elastomeric seal color options: beige, white, gray or black.

### DETAILS

**MATERIAL** 6063-T6 Aluminum

**FINISH** Mill and Rubber Seals

#### MOVEMENT

- Thermal: Horizontal and Vertical

**MOUNTING** Surface

**JOINT SIZE** 2 inches to 6 inches

**LENGTH** 10 Linear Feet

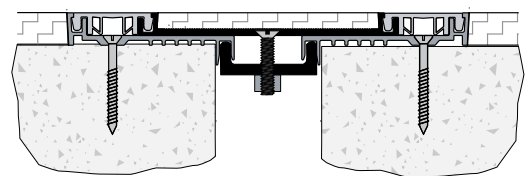
**APPLICATION** Interior

**LOAD** Pedestrian and Light Cart

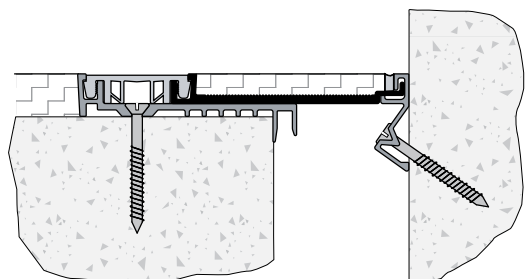
**INSTALLATION** Floor or Wall

**OPTIONS** Seal Color, Moisture Barrier, Fire Barrier

### SEAL COLORS



Floor-to-Floor



Floor-to-Wall/Corner

### MODELS

MODEL	INSTALLATION	JOINT SIZE AT MEAN T°F	SYSTEM WIDTH	TOTAL MOVEMENT
TMM-200	Floor-to-Floor	2" (51mm)	7.75" (197mm)	4.25" (108mm)
TMM-200W	Floor-to-Wall	2" (51mm)	4.88" (124mm)	2.5" (64mm)
TMM-400	Floor-to-Floor	4" (102mm)	9.75" (248mm)	6.25" (159mm)
TMM-400W	Floor-to-Wall	4" (102mm)	6.88" (175mm)	4.5" (114mm)
TMM-600	Floor-to-Floor	6" (152mm)	11.75" (298mm)	8.25" (210mm)
TMM-600W	Floor-to-Wall	6" (152mm)	8.88" (226mm)	6.5" (165mm)

# Seismic Elastomeric

## TWIN SEAL SYSTEM (SFNB/W)



Nystrom's Seismic Elastomeric Twin Seal System, as its name implies offers protection of expansion joints in a seismic event. Constructed of two rubber seals and an aluminum slide plate that accepts floor/wall infill, this system allows for multi-directional movement with a seismic centering bar.

### FEATURES

**ROBUST SYSTEM** Engineered with a seismic centering bar and two rubber seals with impact and movement in mind.

**COMPLEMENTARY DESIGN** The aluminum slide plate is designed with a recessed channel to allow floor/wall infill for seamless design.

### DETAILS

**MATERIAL** 6063-T6 Aluminum with Rubber Seal

**FINISH** Mill

#### MOVEMENT

- Thermal: Horizontal and Vertical
- Seismic: Lateral Shear

**MOUNTING** Block Out

**JOINT SIZE** 2 inches to 24 inches

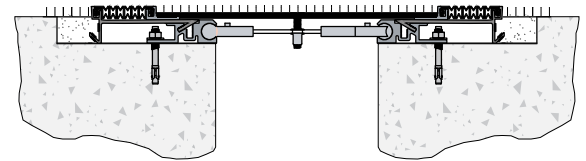
**LENGTH** 10 Linear Feet

**APPLICATION** Interior

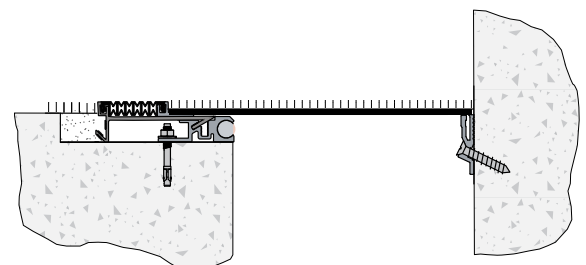
**LOAD** Pedestrian and Light Cart

**INSTALLATION** Floor or Wall

**OPTIONS** Seal Color, Moisture Barrier, Fire Barrier



Floor-to-Floor



Floor-to-Wall/Corner

### MODELS

#### FLOOR-TO-FLOOR

MODEL	JOINT SIZE AT MEAN T°F	SYSTEM WIDTH	TOTAL MOVEMENT
SFNB-200	2" (51mm)	9.88" (251mm)	2" (51mm)
SFNB-400	4" (102mm)	11.88" (302mm)	5" (127mm)
SFNB-600	6" (152mm)	15.88" (403mm)	8" (203mm)
SFNB-800	8" (203mm)	17.88" (454mm)	11" (279mm)
SFNB-1000	10" (254mm)	21.88" (556mm)	14" (356mm)
SFNB-1200	12" (305mm)	23.88" (607mm)	17" (432mm)
SFNB-1800	18" (457mm)	33.88" (861mm)	26" (660mm)
SFNB-2400	24" (610mm)	42.88" (1089mm)	35" (889mm)

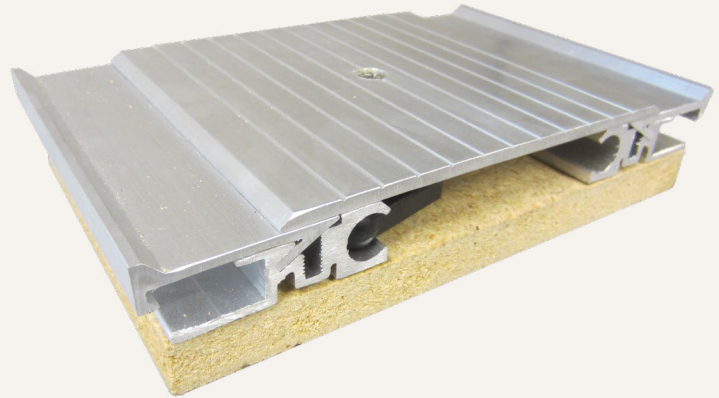
#### FLOOR-TO-WALL/CORNER

MODEL	JOINT SIZE AT MEAN T°F	SYSTEM WIDTH	TOTAL MOVEMENT
SFNB-200W	2" (50mm)	5.94" (151mm)	1.5" (38mm)
SFNB-400W	4" (100mm)	7.94" (202mm)	3.5" (89mm)
SFNB-600W	6" (250mm)	10.94" (278mm)	6.5" (165mm)
SFNB-800W	8" (300mm)	12.94" (329mm)	8.5" (216mm)
SFNB-1000W	10" (100mm)	15.94" (405mm)	7.75" (197mm)
SFNB-1200W	12" (200mm)	17.94" (456mm)	8.75" (222mm)
SFNB-1800W	18" (300mm)	25.69" (653mm)	14" (365mm)
SFNB-2400W	24" (600mm)	33.19" (843mm)	18.25" (464mm)

# Architectural

## SEISMIC SYSTEM (SFG/W)

The Architectural Seismic System is designed to cover expansion control openings in structural, high movement floor joints, when standard aluminum is acceptable.



### FEATURES

**SEISMIC TECHNOLOGY** The cover plate stays centered over openings before, during and after a seismic event with the use of the seismic centering bar.

**ANTI-SLIP SURFACE** Designed with serrations to create an anti-slip surface.

**ADA COMPLIANT** Heavy-duty loading requirements are met while maintaining a smooth ADA compliant transition.

### DETAILS

**MATERIAL** 6063-T6 Aluminum

**FINISH** Mill

#### MOVEMENT

- Thermal: Horizontal and Vertical
- Seismic: Lateral Shear

**MOUNTING** Block Out

**JOINT SIZE** 2 inches to 24 inches

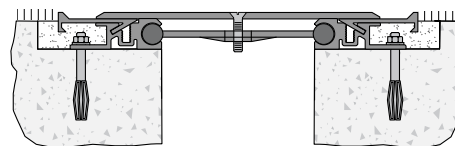
**LENGTH** 10 Linear Feet

**APPLICATION** Interior

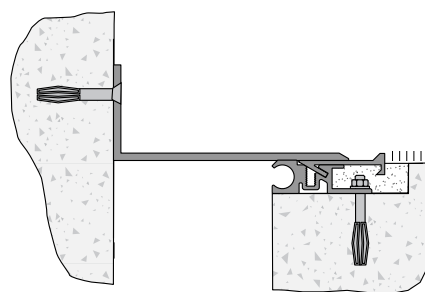
**LOAD** Pedestrian and Light Cart

**INSTALLATION** Floor

**OPTIONS** Moisture Barrier, Fire Barrier



Floor-to-Floor



Floor-to-Wall/Corner

### MODELS

#### FLOOR-TO-FLOOR

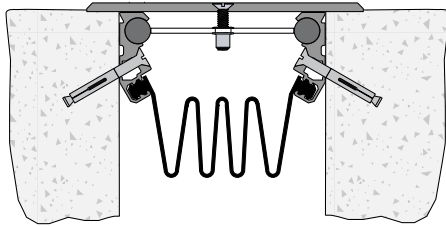
MODEL	JOINT SIZE AT MEAN T°F	SYSTEM WIDTH	TOTAL MOVEMENT
SFG-200	2" (50mm)	5.75" (146mm)	2" (51mm)
SFG-400	4" (100mm)	10.38" (264mm)	5" (127mm)
SFG-600	6" (250mm)	13.75" (349mm)	8" (203mm)
SFG-800	8" (300mm)	15.75" (400mm)	11" (279mm)
SFG-1000	10" (100mm)	18.75" (476mm)	14" (356mm)
SFG-1200	12" (200mm)	21.75" (552mm)	17" (432mm)
SFG-1800	18" (300mm)	31.75" (806mm)	26" (660mm)
SFG-2400	24" (600mm)	40.75" (1035mm)	35" (889mm)

#### FLOOR-TO-WALL/CORNER

MODEL	JOINT SIZE AT MEAN T°F	SYSTEM WIDTH	TOTAL MOVEMENT
SFG-200W	2" (50mm)	3.88" (99mm)	1.5" (38mm)
SFG-400W	4" (100mm)	7.19" (183mm)	4" (102mm)
SFG-600W	6" (250mm)	9.88" (251mm)	6.5" (165mm)
SFG-800W	8" (300mm)	11.88" (302mm)	9" (229mm)
SFG-1000W	10" (100mm)	14.38" (365mm)	11.5" (292mm)
SFG-1200W	12" (200mm)	16.88" (429mm)	14" (356mm)
SFG-1800W	18" (300mm)	24.88" (632mm)	21.5" (546mm)
SFG-2400W	24" (600mm)	32.38" (822mm)	29" (737mm)

# Architectural Seismic System

## SURFACE MOUNT APPLICATION (SFE)



Floor-to-Floor

The Surface Mount Architectural Seismic System takes the DT to the next level. When seismic requirements exist, this design accomplishes all requirements while maintaining the simple look above the flooring.

### DETAILS

**MOUNTING** Surface Mount

**PRODUCT SPECIFICATIONS** Refer to page 14

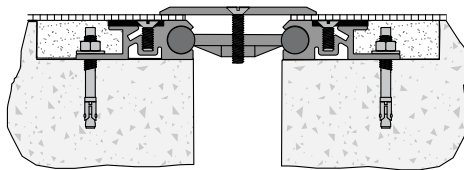
### MODELS

MODEL	JOINT SIZE AT MEAN T°F	SYSTEM WIDTH	TOTAL MOVEMENT
SFE-400	4" (102mm)	6.5" (165mm)	4" (102mm)
SFE-600	6" (152mm)	9.5" (241mm)	7" (178mm)
SFE-800	8" (203mm)	12.5" (318mm)	10" (254mm)

MODEL	JOINT SIZE AT MEAN T°F	SYSTEM WIDTH	TOTAL MOVEMENT
SFE-1000	10" (254mm)	15.5" (394mm)	13" (330mm)
SFE-1200	12" (305mm)	18.5" (470mm)	16" (406mm)
SFE-1800	18" (457mm)	27.5" (699mm)	25" (635mm)

# Architectural Seismic System

## TOP PLATE BLOCK OUT APPLICATION (SFC/W)



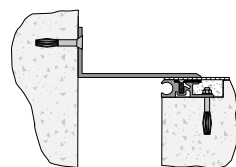
Floor-to-Floor

Nystrom's Top Plate Architectural Seismic System is designed to accommodate seismic movement with lateral shear while maintaining the simple look above the flooring. Blockout is required for this installation.

### DETAILS

**MOUNTING** Block Out

**PRODUCT SPECIFICATIONS** Refer to page 14



Floor-to-Wall/Corner

### MODELS

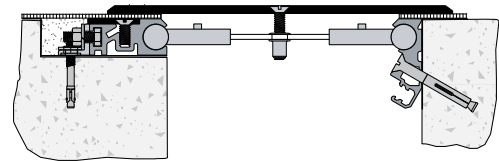
FLOOR-TO-FLOOR			
MODEL	JOINT SIZE AT MEAN T°F	SYSTEM WIDTH	TOTAL MOVEMENT
SFC-200	2" (50mm)	3.5" (89mm)	2" (51mm)
SFC-400	4" (100mm)	6.5" (165mm)	5" (127mm)
SFC-600	6" (250mm)	9.5" (241mm)	8" (203mm)
SFC-800	8" (300mm)	12.5" (318mm)	11" (279mm)
SFC-1000	10" (100mm)	15.5" (394mm)	14" (356mm)
SFC-1200	12" (200mm)	18.5" (470mm)	17" (432mm)
SFC-1800	18" (300mm)	27.5" (699mm)	26" (660mm)
SFC-2400	24" (600mm)	36.5" (927mm)	35" (889mm)

FLOOR-TO-WALL/CORNER			
MODEL	JOINT SIZE AT MEAN T°F	SYSTEM WIDTH	TOTAL MOVEMENT
SFC-200W	2" (50mm)	2.75" (70mm)	1.5" (38mm)
SFC-400W	4" (100mm)	5.25" (133mm)	4" (102mm)
SFC-600W	6" (250mm)	7.75" (197mm)	6.5" (165mm)
SFC-800W	8" (300mm)	10.25" (260mm)	9" (229mm)
SFC-1000W	10" (100mm)	12.75" (324mm)	11.5" (292mm)
SFC-1200W	12" (200mm)	15.25" (387mm)	14" (356mm)
SFC-1800W	18" (300mm)	22.75" (578mm)	21.5" (546mm)
SFC-2400W	24" (600mm)	30.25" (768mm)	29" (737mm)

# Architectural Seismic System

## RENOVATION APPLICATION (SFB)

The Renovation Seismic Expansion Joint System is designed for renovation building projects where an expansion joint is needed to tie new construction to existing construction. The system is bolted into the existing construction and a block out with back fill is necessary for the new construction.



Floor-to-Floor

### DETAILS

**MOUNTING** Block Out & Surface Mount

**PRODUCT SPECIFICATIONS** Refer to page 14

### MODELS

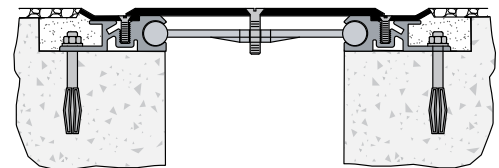
MODEL	JOINT SIZE AT MEAN T°F	SYSTEM WIDTH	TOTAL MOVEMENT
SFB-400	4" (102mm)	6.5" (165mm)	5" (127mm)
SFB-600	6" (152mm)	9.5" (241mm)	8" (203mm)
SFB-800	8" (203mm)	12.5" (318mm)	11" (279mm)

MODEL	JOINT SIZE AT MEAN T°F	SYSTEM WIDTH	TOTAL MOVEMENT
SFB-1000	10" (254mm)	15.5" (394mm)	14" (356mm)
SFB-1200	12" (305mm)	18.5" (470mm)	17" (432mm)
SFB-1800	18" (457mm)	27.5" (699mm)	26" (660mm)

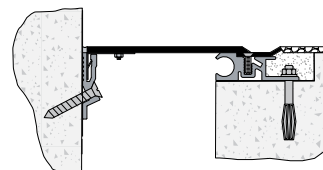
# Architectural Seismic System

## CORROSION RESISTANT APPLICATION (SFX/W)

The Stainless Steel Architectural Seismic System is designed to cover expansion control openings in structural, high movement joints, when the specification calls for a stainless steel requirement.



Floor-to-Floor



Floor-to-Wall/Corner

### DETAILS

**MATERIAL** T304 Stainless Steel

**MOUNTING** Block Out

**OPTIONS** Brass

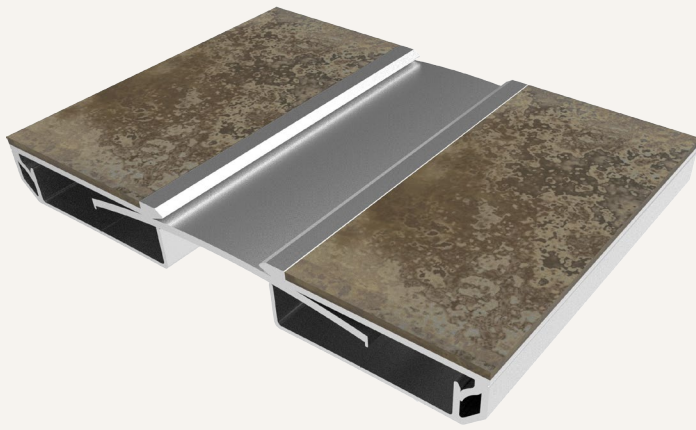
**PRODUCT SPECIFICATIONS** Refer to page 14

### MODELS

FLOOR-TO-FLOOR			
MODEL	JOINT SIZE AT MEAN T°F	SYSTEM WIDTH	TOTAL MOVEMENT
SFX-200	2" (50mm)	6.25" (159mm)	2" (51mm)
SFX-400	4" (100mm)	10.38" (264mm)	5" (127mm)
SFX-600	6" (250mm)	13.75" (349mm)	8" (203mm)
SFX-800	8" (300mm)	15.75" (400mm)	11" (279mm)
SFX-1000	10" (100mm)	18.75" (476mm)	14" (356mm)
SFX-1200	12" (200mm)	21.75" (552mm)	17" (432mm)
SFX-1800	18" (300mm)	31.75" (806mm)	26" (660mm)
SFX-2400	24" (600mm)	40.75" (1035mm)	35" (889mm)

FLOOR-TO-WALL/CORNER			
MODEL	JOINT SIZE AT MEAN T°F	SYSTEM WIDTH	TOTAL MOVEMENT
SFX-200W	2" (50mm)	3.88" (99mm)	1.5" (38mm)
SFX-400W	4" (100mm)	7.19" (183mm)	4" (102mm)
SFX-600W	6" (250mm)	9.88" (251mm)	6.5" (165mm)
SFX-800W	8" (300mm)	11.88" (302mm)	9" (229mm)
SFX-1000W	10" (100mm)	14.38" (365mm)	11.5" (292mm)
SFX-1200W	12" (200mm)	16.88" (429mm)	14" (356mm)
SFX-1800W	18" (300mm)	24.88" (632mm)	21.5" (546mm)
SFX-2400W	24" (600mm)	35" (889mm)	29" (737mm)





# Seismic Glide

## FLOORING INFILL SYSTEM (NBR/W)

Nystrom's Seismic flooring infill systems is designed to accept most traditional Floor Systems and allow for multi-directional thermal movement, yet minimize the sight-line when installed.

### FEATURES

**EASIER INSTALLATION** The beveled edge relief on the extrusion virtually eliminates any need to remove concrete from the block-out.

**FLOORING INFILL** Designed with a recess for vinyl, carpet or tile (VCT) flooring to cover the aluminum plate and reduce the overall sight-line.

**COORDINATING CORNERS** Available with corner option for a complete floor solution.

### DETAILS

**MATERIAL** 6063-T6 Aluminum

**FINISH** Mill

#### MOVEMENT

- Thermal: Horizontal and Vertical
- Seismic: Lateral Shear

**MOUNTING** Block Out

**JOINT SIZE** 1 inch to 4 inches

**LENGTH** 10 Linear Feet

**APPLICATION** Interior

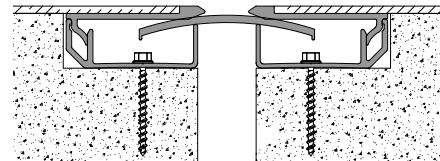
**LOAD** Pedestrian and Light Cart

**INSTALLATION** Floor

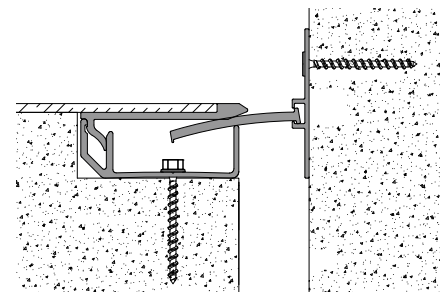
**OPTIONS** Moisture Barrier, Fire Barrier

### MODELS

MODEL	INSTALLATION	JOINT SIZE AT MEAN T°F	SYSTEM WIDTH	TOTAL MOVEMENT
NBR-100	Floor-to-Floor	1" (25mm)	2" (50mm)	2" (51mm)
NBR-100W	Floor-to-Wall	1" (25mm)	1.5" (38mm)	1" (25mm)
NBR-200	Floor-to-Floor	2" (50mm)	3" (76mm)	3.75" (95mm)
NBR-200W	Floor-to-Wall	2" (50mm)	2.5" (64mm)	2.25" (57mm)
NBR-300	Floor-to-Floor	3" (76mm)	4" (102mm)	3" (76mm)
NBR-300W	Floor-to-Wall	3" (76mm)	3.5" (89mm)	2.25" (57mm)
NBR-400	Floor-to-Floor	4" (102mm)	5" (127mm)	4" (102mm)
NBR-400W	Floor-to-Wall	4" (102mm)	4.5" (114mm)	2.25" (57mm)



Floor-to-Floor

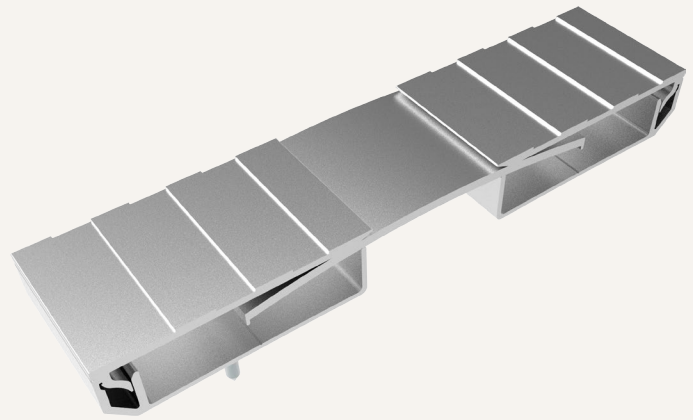


Floor-to-Wall/Corner

# Seismic Glide

## NO BUMP SYSTEM (NBF/W)

Nystrom's Seismic Glide No Bump system is designed to allow for multi-directional thermal movement, in a durable, easily assembled cover system. The convex design allows for a smooth, no bump, transition, when light cart wheeled traffic is rolled over the system.



### FEATURES

**EASIER INSTALLATION** The beveled edge relief on the extrusion virtually eliminates any need to remove concrete from the block-out.

**ANTI-SLIP SURFACE** The no bump, ribbed anti-slip surface provides safe functionality for foot and cart traffic.

**COORDINATING CORNERS** Available with corner option for a complete floor solution.

### DETAILS

**MATERIAL** 6063-T6 Aluminum

**FINISH** Mill

#### MOVEMENT

- Thermal: Horizontal and Vertical
- Seismic: Lateral Shear

**MOUNTING** Block Out

**JOINT SIZE** 1 inch to 4 inches

**LENGTH** 10 Linear Feet

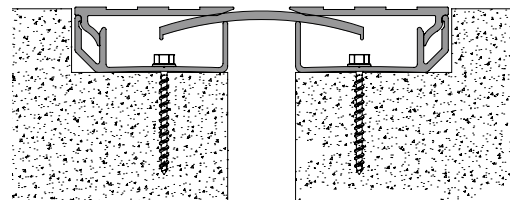
**LOAD** Pedestrian and Light Cart

**INSTALLATION** Floor

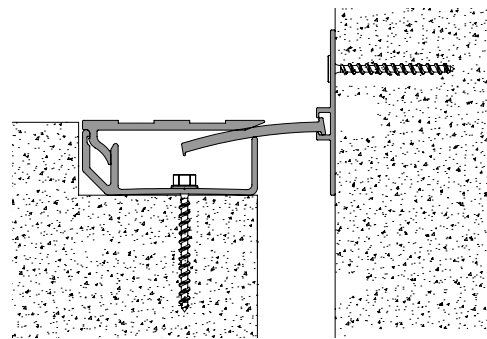
**OPTIONS** Moisture Barrier, Fire Barrier

### MODELS

MODEL	INSTALLATION	JOINT SIZE AT MEAN T°F	SYSTEM WIDTH	TOTAL MOVEMENT
NBF-100	Floor-to-Floor	1" (25mm)	3.5" (89mm)	2" (51mm)
NBF-100W	Floor-to-Wall	1" (25mm)	2.25" (57mm)	1" (25mm)
NBF-200	Floor-to-Floor	2" (50mm)	4.5" (114mm)	3.75" (95mm)
NBF-200W	Floor-to-Wall	2" (50mm)	3.25" (83mm)	2.25" (57mm)
NBF-300	Floor-to-Floor	3" (76mm)	7.94" (202mm)	3" (76mm)
NBF-300W	Floor-to-Wall	3" (76mm)	5.5" (140mm)	2.25" (57mm)
NBF-400	Floor-to-Floor	4" (102mm)	8.94" (227mm)	4" (102mm)
NBF-400W	Floor-to-Wall	4" (102mm)	6.5" (165mm)	2.25" (57mm)



Floor-to-Floor



Floor-to-Wall/Corner

# Seismic Pan

## FLOORING SYSTEM (FLP/W)



The Seismic Pan System is commonly used for stone, terrazzo tile and concrete slabs as well as most traditional flooring materials in courtyards and walkways. It's capable of accommodating lateral shear and multi-directional movement including vertical displacement.

### FEATURES

**DEEP WELL PAN** Designed for terrazzo tile when large sections of tile are common.

**DURABLE** The backfilled concrete strengthens the design for long lasting performance.

### DETAILS

**MATERIAL** 6063-T6 Aluminum

**FINISH** Mill

#### MOVEMENT

- Thermal: Horizontal and Vertical
- Seismic: Lateral Shear

**MOUNTING** Block Out

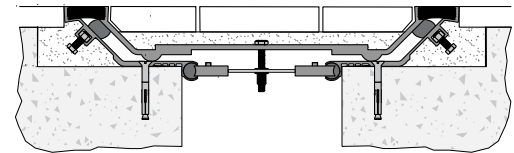
**JOINT SIZE** 2 inches to 18 inches

**LENGTH** 10 Linear Feet

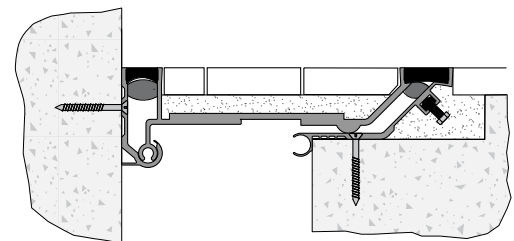
**LOAD** Pedestrian and Light Cart

**INSTALLATION** Floor

**OPTIONS** Moisture Barrier, Fire Barrier



Floor-to-Floor



Floor-to-Wall/Corner

### MODELS

#### FLOOR-TO-FLOOR

MODEL	JOINT SIZE AT MEAN T°F	SYSTEM WIDTH	TOTAL MOVEMENT
FLP-200	2" (50mm)	10.8125" (275mm)	3" (76mm)
FLP-400	4" (100mm)	12.88" (327mm)	4.75" (121mm)
FLP-600	6" (250mm)	14.88" (378mm)	7.75" (197mm)
FLP-800	8" (300mm)	18.88" (480mm)	10.75" (273mm)
FLP-1000	10" (100mm)	20.88" (530mm)	13.75" (349mm)
FLP-1200	12" (200mm)	23.88" (607mm)	16.75" (425mm)
FLP-1600	16" (300mm)	29.88" (759mm)	22.75" (578mm)
FLP-1800	18" (600mm)	34.88" (886mm)	25.75" (654mm)

#### FLOOR-TO-WALL/CORNER

MODEL	JOINT SIZE AT MEAN T°F	SYSTEM WIDTH	TOTAL MOVEMENT
FLP-200W	2" (50mm)	6.4375" (164mm)	1.375" (35mm)
FLP-400W	4" (100mm)	8.44" (214mm)	3" (76mm)
FLP-600W	6" (250mm)	10.44" (265mm)	5.5" (140mm)
FLP-800W	8" (300mm)	13.44" (341mm)	8" (203mm)
FLP-1000W	10" (100mm)	15.44" (392mm)	10.5" (267mm)
FLP-1200W	12" (200mm)	17.94" (456mm)	13" (330mm)
FLP-1600W	16" (300mm)	22.94" (583mm)	18" (457mm)
FLP-1800W	18" (600mm)	26.44" (672mm)	20.5" (521mm)

# Seismic Slide

## FLOORING SYSTEM (FLC/W)

This metal floor cover is designed for interior applications where low maintenance or tamper-resistant applications are desirable. With a recessed side frame and sloped center plate, this model helps reduce visual line as compared to other metal floor covers.



### FEATURES

**DURABLE** The seismic glide system is an ideal option for commercial environments.

**MINIMAL SIGHT LINE** With the sliding surface, the sight line remains limited and unchanged as the joint moves.

**COORDINATING CORNERS** Available with a corner option for a complete floor solution.

### DETAILS

**MATERIAL** 6063-T6 Aluminum

**FINISH** Mill

#### MOVEMENT

- Thermal: Horizontal and Vertical
- Seismic: Lateral Shear

**MOUNTING** Block Out

**JOINT SIZE** 1 inch to 6 inches

**LENGTH** 10 Linear Feet

**APPLICATION** Interior

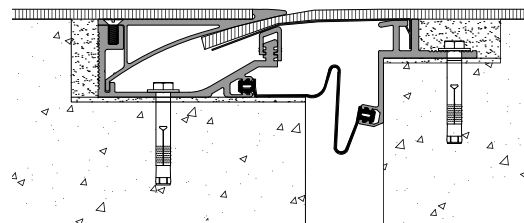
**LOAD** Pedestrian and Light Cart

**INSTALLATION** Floor

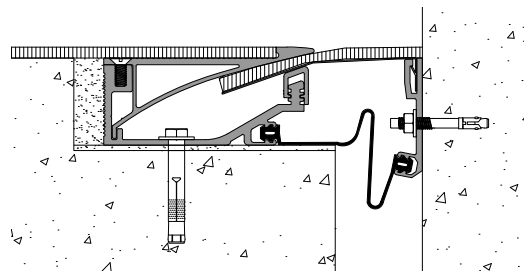
**OPTIONS** Moisture Barrier, Fire Barrier

### MODELS

MODEL	INSTALLATION	JOINT SIZE AT MEAN T°F	SYSTEM WIDTH	TOTAL MOVEMENT
FLC-100	Floor-to-Floor	1" (25mm)	9.69" (246mm)	1" (25mm)
FLC-100W	Floor-to-Wall	1" (25mm)	7.31" (186mm)	2" (51mm)
FLC-200	Floor-to-Floor	2" (51mm)	9.69" (246mm)	2" (51mm)
FLC-200W	Floor-to-Wall	2" (51mm)	7.31" (186mm)	2" (51mm)
FLC-400	Floor-to-Floor	4" (102mm)	9.69" (246mm)	4" (102mm)
FLC-400W	Floor-to-Wall	4" (102mm)	7.31" (186mm)	4" (102mm)
FLC-600	Floor-to-Floor	6" (152mm)	13.63" (346mm)	6" (152mm)
FLC-600W	Floor-to-Wall	6" (152mm)	11.25" (286mm)	6" (152mm)



Floor-to-Floor



Floor-to-Wall/Corner

# Aluminum

## WALL & CEILING SYSTEM (WJ/W)



Nystrom's Aluminum Wall and Ceiling system is capable of thermal movement. It mounts easily after final wall surface is complete. Standard with a clear anodize finish.

### FEATURES

**COORDINATING CORNERS** Available with corner option for a complete solution.

**ARCHITECTURAL AESTHETICS** The sliding cover plate with a clear anodized finish provides a high-end appearance.

**CONTINUOUS SIGHT LINE** This system can be used on walls, ceilings and corners to provide seamless and continuous aesthetics.

### DETAILS

**MATERIAL** 6063-T6 Aluminum

**FINISH** Clear Anodize

#### MOVEMENT

- Thermal: Horizontal

**MOUNTING** Surface

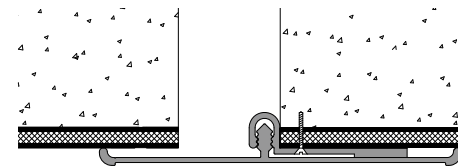
**JOINT SIZE** 1 inch to 3 inches

**LENGTH** 10 Linear Feet

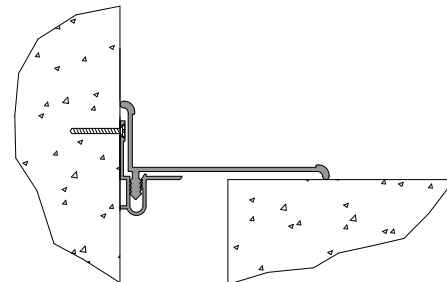
**APPLICATION** Interior

**INSTALLATION** Wall or Ceiling

**OPTIONS** Moisture Barrier, Fire Barrier



Wall-to-Wall



Wall/Ceiling Corner

### MODELS

MODEL	INSTALLATION	JOINT SIZE AT MEAN T°F	SYSTEM WIDTH	TOTAL MOVEMENT
WJ-100	Wall-to-Wall	1" (25mm)	3" (76mm)	0.5" (13mm)
WJ-100W	Wall-to-Ceiling/Corner	1" (25mm)	3" (76mm)	0.5" (13mm)
WJ-150	Wall-to-Wall	1.5" (38mm)	4" (102mm)	2" (51mm)
WJ-200	Wall-to-Wall	2" (51mm)	5.75" (146mm)	2" (51mm)
WJ-200W	Wall-to-Ceiling/Corner	2" (51mm)	5.75" (146mm)	2" (51mm)
WJ-300	Wall-to-Wall	3" (76mm)	7" (178mm)	3" (76mm)
WJ-300W	Wall-to-Ceiling/Corner	3" (76mm)	7" (178mm)	3" (76mm)

# Elastomeric

## CORRIDOR SYSTEM (LCWF)

Nystrom's Elastomeric Corridor System limits the sight line of the expansion joint by mounting inside the joint opening. Available in a variety of attachment solutions for various applications with standard santoprene color selection to match your surrounding substrate and finish material.



### FEATURES

**COMPLEMENTARY SEAL COLORS** Available in four elastomeric seal color options: beige, white, gray or black.

**QUICKER INSTALLATION** Reduce installation time and labor costs with fast and easy installation.

**CONTINUOUS SIGHT LINE** This system can be used on walls, ceilings and corners to provide seamless and continuous aesthetics.

### DETAILS

**MATERIAL** 6063-T6 Aluminum with Rubber Seal

**FINISH** Mill

#### MOVEMENT

- Thermal: Horizontal

**MOUNTING** Flush

**JOINT SIZE** 1 inch to 2 inches

**SEAL LENGTH** Continuous

**APPLICATION** Interior

**INSTALLATION** Wall or Ceiling

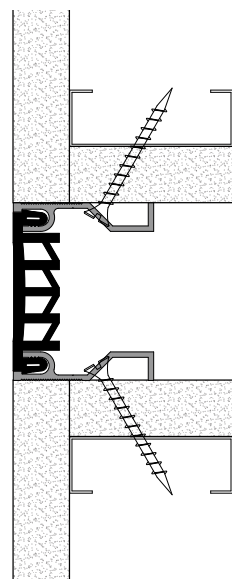
**OPTIONS** Seal Color, Moisture Barrier, Fire Barrier

### SEAL COLORS



### MODELS

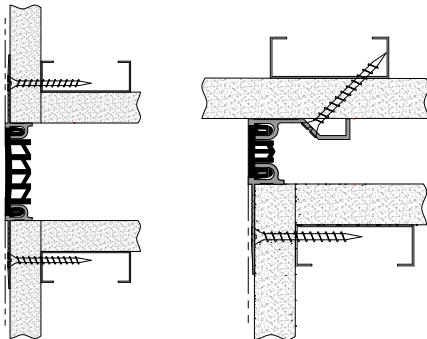
MODEL	INSTALLATION	JOINT SIZE AT MEAN T°F	SYSTEM WIDTH	TOTAL MOVEMENT
LCWF-100	Wall-to-Wall or Wall/Ceiling Corner	1" (25mm)	1" (25mm)	0.5" (13mm)
LCWF-200	Wall-to-Wall or Wall/Ceiling Corner	2" (51mm)	2" (51mm)	1" (25mm)



Wall-to-Wall

# Elastomeric Corridor System

## DRYWALL BEAD APPLICATION (LCW/W)



Wall-to-Wall

Wall/Ceiling Corner

This Drywall Bead Elastomeric Corridor System limits the sight line of the expansion joint by using a drywall bead for mounting. The finished tape and mud process provides a flush finish installation with an option of four Santoprene seal color options to match your surroundings.

### DETAILS

**MOUNTING** Flush with Drywall Bead

**PRODUCT SPECIFICATIONS** Refer to page 22

### MODELS

#### WALL-TO-WALL

MODEL	JOINT SIZE AT MEAN T°F	SYSTEM WIDTH	TOTAL MOVEMENT
LCW-100	1" (25mm)	1" (25mm)	.5" (13mm)
LCW-200	2" (51mm)	2" (51mm)	1" (25mm)

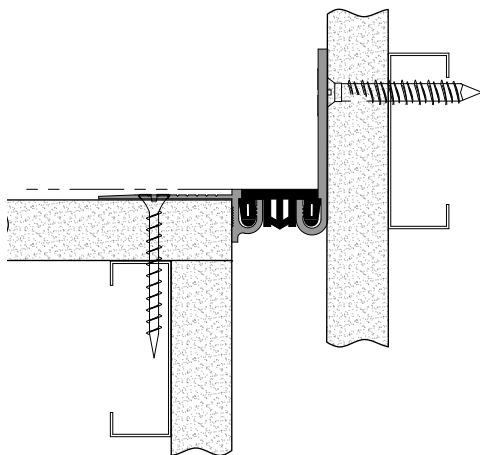
#### WALL/CEILING CORNER

MODEL	JOINT SIZE AT MEAN T°F	SYSTEM WIDTH	TOTAL MOVEMENT
LCW-100W	1" (25mm)	1" (25mm)	.5" (13mm)
LCW-200W	2" (51mm)	2" (51mm)	1" (25mm)

See page 25 for similar seismic product. LCD

# Elastomeric Corridor System

## CORNER DRYWALL BEAD APPLICATION (LCWM)



Wall/Ceiling Corner

Designed for drywall corner applications, this Elastomeric Corridor Corner System limits the sight line of the expansion joint by using a drywall bead. The system is mounted to the outside of the joint opening with a finished tape and mud process, while maintaining the elegance of exposed aluminum corner plate. The Santoprene seal comes in four colors to match your surroundings.

### DETAILS

**MOUNTING** Flush with Drywall Bead

**PRODUCT SPECIFICATIONS** Refer to page 22

### MODELS

#### WALL/CEILING CORNER

MODEL	JOINT SIZE AT MEAN T°F	SYSTEM WIDTH	TOTAL MOVEMENT
LCWM-100	1" (25mm)	1" (25mm)	.5" (13mm)
LCWM-200	2" (51mm)	2" (51mm)	1" (25mm)

# Seismic Elastomeric

## CORRIDOR SYSTEM (LCH)

Nystrom's Seismic Elastomeric Corridor System is a system dedicated to limiting the sight line of the expansion joint by mounting inside the joint opening, and allows a color selection to match your surrounding substrate and finish material. This system accommodates seismic movement.



### FEATURES

**MAXIMUM MOVEMENT** Deep "V" design allows for maximum thermal and seismic movement.

**COMPLEMENTARY SEAL COLORS** Available in four elastomeric seal color options: beige, white, gray or black.

**CONTINUOUS SIGHT LINE** This system can be used on walls, ceilings and corners to provide seamless and continuous aesthetics.

### DETAILS

**MATERIAL** 6063-T6 Aluminum with Rubber Seal

**FINISH** Mill

#### MOVEMENT

- Thermal: Horizontal and Vertical
- Seismic: Lateral Shear

**MOUNTING** Flush

**JOINT SIZE** 1 inch to 6 inches

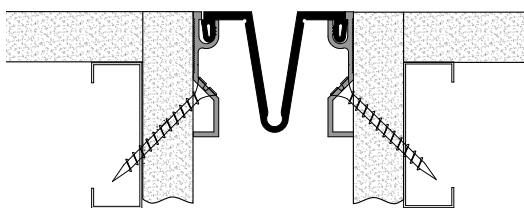
**SEAL LENGTH** Continuous

**APPLICATION** Interior

**INSTALLATION** Wall or Ceiling

**OPTIONS** Seal Color

### SEAL COLORS



Wall/Ceiling Corner

### MODELS

MODEL	INSTALLATION	JOINT SIZE AT MEAN T°F	SYSTEM WIDTH	TOTAL MOVEMENT
LCH-100	Wall-to-Wall or Wall/Ceiling Corner	1" (25mm)	1" (25mm)	0.5" (13mm)
LCH-200	Wall-to-Wall or Wall/Ceiling Corner	2" (51mm)	2" (51mm)	2" (51mm)
LCH-300	Wall-to-Wall or Wall/Ceiling Corner	3" (76mm)	3" (76mm)	3" (76mm)
LCH-400	Wall-to-Wall or Wall/Ceiling Corner	4" (102mm)	4" (102mm)	4" (102mm)
LCH-500	Wall-to-Wall or Wall/Ceiling Corner	5" (127mm)	5" (127mm)	5" (127mm)
LCH-600	Wall-to-Wall or Wall/Ceiling Corner	6" (152mm)	6" (152mm)	6" (152mm)



# Seismic Elastomeric DRYWALL SYSTEM (LCD)



This Seismic Elastomeric Drywall System limits the sight line of the expansion joint by using a drywall bead to mount the system outside the joint opening with a finished tape and mud process. The finished Santoprene seal comes in four colors to match your surrounding substrate and finish material. This system accommodates seismic movement.

## FEATURES

**MAXIMUM MOVEMENT** Deep “V” design allows for maximum thermal and seismic movement.

**DRYWALL BEAD FLANGE** Designed for drywall applications with punched holes for easy mounting. Mud is floated overtop of flange and easily painted leaving only the seal exposed.

**COMPLEMENTARY SEAL COLORS** Available in four elastomeric seal color options: beige, white, gray or black.

## DETAILS

**MATERIAL** 6063-T6 Aluminum with Rubber Seal

**FINISH** Mill

### MOVEMENT

- Thermal: Horizontal and Vertical
- Seismic: Lateral Shear

**MOUNTING** Flush with drywall bead

**JOINT SIZE** 1 inch to 6 inches

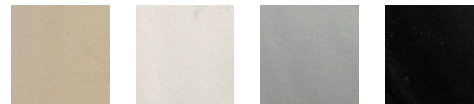
**SEAL LENGTH** Continuous

**APPLICATION** Interior

**INSTALLATION** Wall or Ceiling

**OPTIONS** Seal Color

## SEAL COLORS

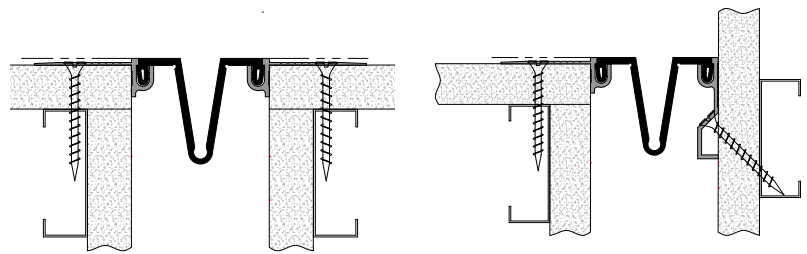


Beige

White

Gray

Black



Wall-to-Wall

Wall/Ceiling Corner

## MODELS

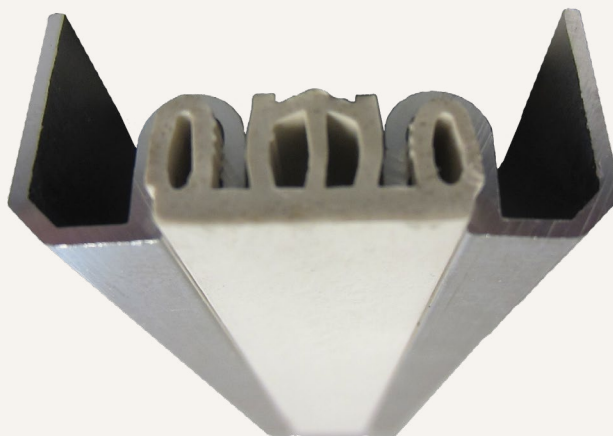
MODEL	INSTALLATION	JOINT SIZE AT MEAN T°F	SYSTEM WIDTH	TOTAL MOVEMENT
LCD-100	Wall-to-Wall	1" (25mm)	1" (25mm)	0.5" (13mm)
LCD-100W	Wall/Ceiling Corner	1" (25mm)	1" (25mm)	0.5" (13mm)
LCD-200	Wall-to-Wall	2" (51mm)	2" (51mm)	2" (51mm)
LCD-200W	Wall/Ceiling Corner	2" (51mm)	2" (51mm)	2" (51mm)
LCD-300	Wall-to-Wall	3" (76mm)	3" (76mm)	3" (76mm)
LCD-300W	Wall/Ceiling Corner	3" (76mm)	3" (76mm)	3" (76mm)

MODEL	INSTALLATION	JOINT SIZE AT MEAN T°F	SYSTEM WIDTH	TOTAL MOVEMENT
LCD-400	Wall-to-Wall	4" (102mm)	4" (102mm)	4" (102mm)
LCD-400W	Wall/Ceiling Corner	4" (102mm)	4" (102mm)	4" (102mm)
LCD-500	Wall-to-Wall	5" (127mm)	5" (127mm)	5" (127mm)
LCD-500W	Wall/Ceiling Corner	5" (127mm)	5" (127mm)	5" (127mm)
LCD-600	Wall-to-Wall	6" (152mm)	6" (152mm)	6" (152mm)
LCD-600W	Wall/Ceiling Corner	6" (152mm)	6" (152mm)	6" (152mm)

# Elastomeric Acoustical

## CEILING SYSTEM (LCA)

This Elastomeric Acoustical Ceiling System limits the sight line of the expansion joint by using an aluminum channel that attaches to the grid system above the sight line. The finished Santoprene seal comes in four colors to match your surrounding substrate and finish material.



### FEATURES

**ACOUSTIC CEILING** Fully integrated with suspended ceiling grid system.

**COMPLEMENTARY SEAL COLORS** Available in four elastomeric seal color options: beige, white, gray or black.

**CONTINUOUS SIGHT LINE** This system can be used on walls, ceilings and corners to provide seamless and continuous aesthetics.

### DETAILS

**MATERIAL** 6063-T6 Aluminum with Rubber Seal

**FINISH** Mill

#### MOVEMENT

- Thermal: Horizontal

**MOUNTING** Flush - Suspended

**JOINT SIZE** 1 inch to 2 inches

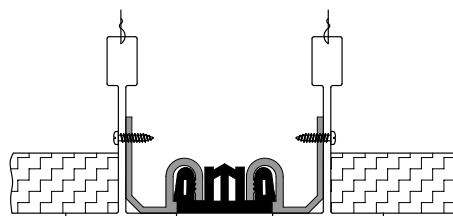
**SEAL LENGTH** Continuous

**APPLICATION** Interior

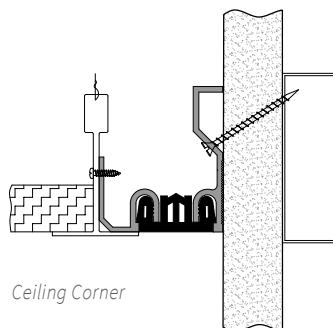
**INSTALLATION** Ceiling

**OPTIONS** Seal Color

### SEAL COLORS



Ceiling-to-Ceiling



Ceiling Corner

### MODELS

MODEL	INSTALLATION	JOINT SIZE AT MEAN T°F	SYSTEM WIDTH	TOTAL MOVEMENT
LCA-100	Ceiling-to-Ceiling	1" (25mm)	1" (25mm)	0.5" (13mm)
LCA-100W	Ceiling Corner	1" (25mm)	1" (25mm)	0.5" (13mm)
LCA-200	Ceiling-to-Ceiling	2" (51mm)	2" (51mm)	1" (25mm)
LCA-200W	Ceiling Corner	2" (51mm)	2" (51mm)	1" (25mm)

# Seismic Elastomeric

## CEILING SYSTEM (LCE/W)



Nystrom's Seismic Elastomeric Ceiling System uses an aluminum channel attached to the grid system above the sight line. The finished Santoprene seal comes in four colors to match your surrounding substrate and finish material. This system accommodates seismic movement.

### FEATURES

**ACOUSTIC CEILING** Fully integrated with suspended ceiling grid system.

**MAXIMUM MOVEMENT** Deep "V" design allows for maximum thermal and seismic movement.

**COMPLEMENTARY SEAL COLORS** Available in four elastomeric seal color options: beige, white, gray or black.

### DETAILS

**MATERIAL** 6063-T6 Aluminum with Rubber Seal

**FINISH** Mill

#### MOVEMENT

- Thermal: Horizontal and Vertical
- Seismic: Lateral Shear

**MOUNTING** Flush - Suspended

**JOINT SIZE** 1 inch to 6 inches

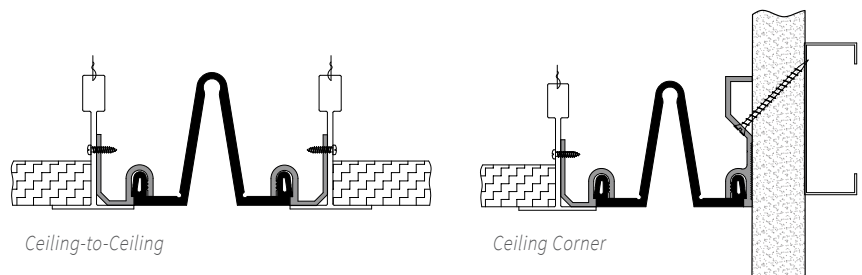
**SEAL LENGTH** Continuous

**APPLICATION** Interior

**INSTALLATION** Ceiling

**OPTIONS** Seal Color

### SEAL COLORS



### MODELS

MODEL	INSTALLATION	JOINT SIZE AT MEAN T°F	SYSTEM WIDTH	TOTAL MOVEMENT
LCE-100	Ceiling-to-Ceiling	1" (25mm)	0.75" (19mm)	0.5" (13mm)
LCE-100W	Ceiling Corner	1" (25mm)	0.75" (19mm)	0.5" (13mm)
LCE-200	Ceiling-to-Ceiling	2" (51mm)	1.75" (44mm)	2" (51mm)
LCE-200W	Ceiling Corner	2" (51mm)	1.75" (44mm)	2" (51mm)
LCE-300	Ceiling-to-Ceiling	3" (76mm)	2.75" (70mm)	3" (76mm)
LCE-300W	Ceiling Corner	3" (76mm)	2.75" (70mm)	3" (76mm)

MODEL	INSTALLATION	JOINT SIZE AT MEAN T°F	SYSTEM WIDTH	TOTAL MOVEMENT
LCE-400	Ceiling-to-Ceiling	4" (102mm)	3.75" (95mm)	4" (102mm)
LCE-400W	Ceiling Corner	4" (102mm)	3.75" (95mm)	4" (102mm)
LCE-500	Ceiling-to-Ceiling	5" (127mm)	4.75" (121mm)	5" (127mm)
LCE-500W	Ceiling Corner	5" (127mm)	4.75" (121mm)	5" (127mm)
LCE-600	Ceiling-to-Ceiling	6" (152mm)	5.75" (146mm)	6" (152mm)
LCE-600W	Ceiling Corner	6" (152mm)	5.75" (146mm)	6" (152mm)

# Seismic Elastomeric

## TWIN SEAL SYSTEM (SWNB/W)

The Seismic Elastomeric Twin Seal System offers protection of expansion joints in a seismic event. This system is constructed of two rubber seals and an aluminum slide plate. This system allows for multi-directional movement with a seismic centering bar.



### FEATURES

**SEISMIC MOVEMENT** This seismic system is engineered to accept lateral shear.

**COORDINATING CORNERS** Available with a corner option for a completion solution.

**COMPLEMENTARY SEAL COLORS** Available in four elastomeric seal color options: beige, white, gray or black.

### DETAILS

**MATERIAL** 6063-T6 Aluminum with Rubber Seal

**FINISH** Clear Anodized

#### MOVEMENT

- Thermal: Horizontal and Vertical
- Seismic: Lateral Shear

**MOUNTING** Surface

**JOINT SIZE** 4 inches to 24 inches

**LENGTH** 10 Linear Feet

**APPLICATION** Interior

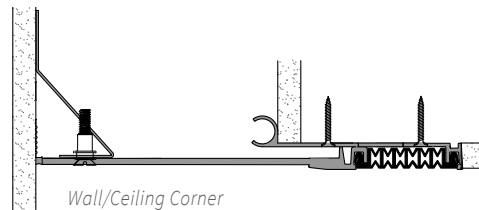
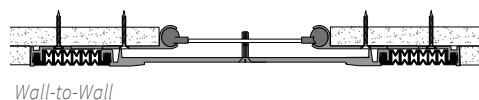
**INSTALLATION** Wall or Ceiling

**OPTIONS** Seal Color, Moisture Barrier, Fire Barrier

### MODELS

WALL-TO-WALL			
MODEL	JOINT SIZE AT MEAN T°F	SYSTEM WIDTH	TOTAL MOVEMENT
SWNB-400	4" (102mm)	11.88" (302mm)	4" (102mm)
SWNB-600	6" (152mm)	15.88" (403mm)	7" (178mm)
SWNB-800	8" (203mm)	17.88" (454mm)	10" (254mm)
SWNB-1000	10" (254mm)	21.88" (556mm)	13" (330mm)
SWNB-1200	12" (305mm)	23.88" (606mm)	16" (406mm)
SWNB-1800	18" (305mm)	33.88" (860mm)	25" (635mm)
SWNB-2000	20" (381mm)	42.88" (1089mm)	34" (864mm)

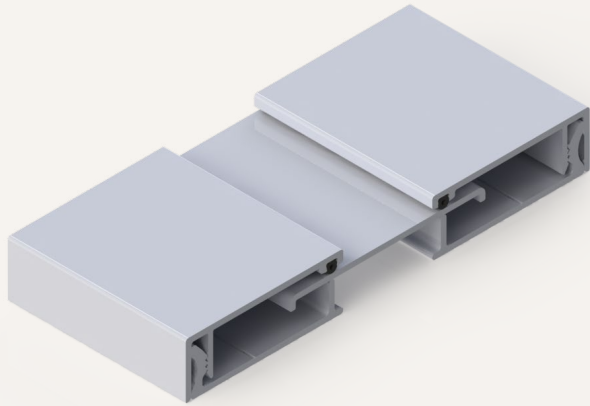
### SEAL COLORS



CORNER			
MODEL	JOINT SIZE AT MEAN T°F	SYSTEM WIDTH	TOTAL MOVEMENT
SWNB-400W	4" (102mm)	7.94" (202mm)	3.25" (83mm)
SWNB-600W	6" (152mm)	10.94" (278mm)	5.75" (146mm)
SWNB-800W	8" (203mm)	12.94" (329mm)	7.75" (197mm)
SWNB-1000W	10" (254mm)	15.94" (405mm)	11.25" (286mm)
SWNB-1200W	12" (305mm)	17.94" (456mm)	13.25" (337mm)
SWNB-1800W	18" (305mm)	25.63" (651mm)	21" (533mm)
SWNB-2000W	20" (381mm)	33.13" (841mm)	28.5" (724mm)

# Seismic Glide

## SYSTEM (NBW/W)



Nystrom's Seismic Glide System wall and ceiling expansion control system is capable of multi directional changes, as well as integrating with a variety of wall and ceiling surface treatments. Seismic Glide is available in clear anodized aluminum to create a sleek look at an economical price.

### FEATURES

**COORDINATING CORNERS** Available with corner option for a complete solution.

**GASKETS** The assembly includes a gasket strip on either side to limit air flow in the joint.

**EASY ASSEMBLY** After base plates are attached to the wall, the cover assembly snaps together for a tight fit.

### DETAILS

**MATERIAL** 6063-T6 Aluminum

**FINISH** Clear Anodized

#### MOVEMENT

- Thermal: Horizontal and Vertical
- Seismic: Lateral Shear

**MOUNTING** Surface

**JOINT SIZE** 1 inch to 2 inches

**LENGTH** 10 Linear Feet

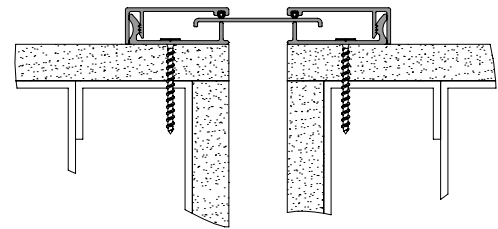
**APPLICATION** Interior

**INSTALLATION** Wall or Ceiling

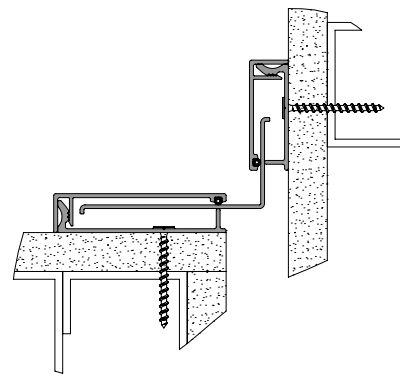
**OPTIONS** Moisture Barrier, Fire Barrier

### MODELS

MODEL	INSTALLATION	JOINT SIZE AT MEAN T°F	SYSTEM WIDTH	TOTAL MOVEMENT
NBW-100	Wall-to-Wall	1" (25mm)	3" (76mm)	1" (25mm)
NBW-100W	Corner	1" (25mm)	3" (76mm)	1" (25mm)
NBW-200	Wall-to-Wall	2" (51mm)	5" (127mm)	2" (51mm)
NBW-200W	Corner	2" (51mm)	5" (127mm)	2" (51mm)



Wall-to-Wall

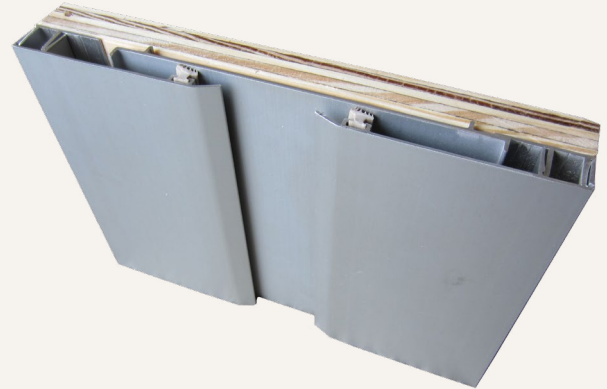


Wall/Ceiling Corner

# Seismic Glide

## WALL XL SYSTEM (WCS/W)

The Seismic Glide Wall XL System is a wall and ceiling expansion control system capable of following complex directional changes and integrates with a variety of wall and ceiling surface treatments. Seismic Glide XL is available in clear or color anodized aluminum, brass or stainless steel to create a high end elegant appearance at an economical price.



### FEATURES

**EXTRA LARGE OPENINGS** For openings larger than 2 inches, this system is designed to accommodate with lateral shear.

**REDUCED AIR INFILTRATION** The assembly includes a gasket strip on both sides to limit air flow through the joint.

### DETAILS

**MATERIAL** 6063-T6 Aluminum

**FINISH** Clear Anodized

#### MOVEMENT

- Thermal: Horizontal and Vertical
- Seismic: Lateral Shear

**MOUNTING** Surface

**JOINT SIZE** 3 inches to 24 inches

**LENGTH** 10 Linear Feet

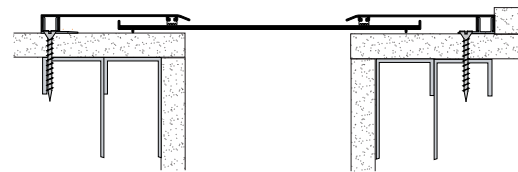
**APPLICATION** Interior

**INSTALLATION** Wall or Ceiling

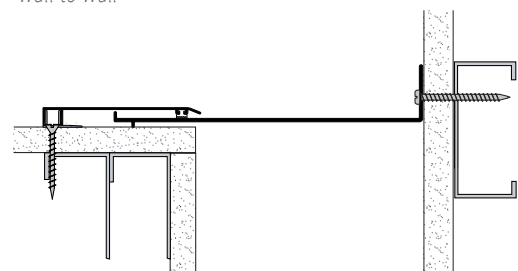
**OPTIONS** Brass, Stainless Steel, Moisture Barrier, Fire Barrier

### MODELS

WALL-TO-WALL			
MODEL	JOINT SIZE AT MEAN T°F	SYSTEM WIDTH	TOTAL MOVEMENT
WCS-300	3" (50mm)	7.56" (192mm)	4" (102mm)
WCS-400	4" (102mm)	13.63" (346mm)	7" (178mm)
WCS-600	6" (152mm)	15.63" (397mm)	7" (178mm)
WCS-800	8" (203mm)	20.75" (527mm)	8" (203mm)
WCS-1000	10" (254mm)	22.25" (565mm)	13.625" (346mm)
WCS-1200	12" (305mm)	26.25" (667mm)	16.625" (422mm)
WCS-1800	15" (381mm)	32.75" (832mm)	21.625" (549mm)
WCS-2400	18" (457mm)	38.25" (972mm)	25.625" (657mm)



Wall-to-Wall



Wall/Ceiling Corner

CORNER			
MODEL	JOINT SIZE AT MEAN T°F	SYSTEM WIDTH	TOTAL MOVEMENT
WCS-300W	3" (50mm)	7.25" (184mm)	3" (76mm)
WCS-400W	4" (102mm)	7.75" (197mm)	4.5" (114mm)
WCS-600W	6" (152mm)	10.75" (273mm)	4.5" (114mm)
WCS-800W	8" (203mm)	13.75" (349mm)	8" (203mm)
WCS-1000W	10" (254mm)	16.125" (410mm)	6.625" (169mm)
WCS-1200W	12" (305mm)	19.125" (486mm)	8.125" (206mm)
WCS-1800W	15" (381mm)	23.875" (606mm)	10.625" (270mm)
WCS-2400W	18" (457mm)	28.125" (714mm)	12.625" (321mm)

# Seismic Architectural

## WALL SYSTEM (FCT/W)



Nystrom's Seismic Architectural Wall System is a wall and ceiling system designed to accommodate both thermal and multi-directional movement. The system provides a simple, attractive and durable solution for internal environments.

### FEATURES

**SEISMIC CENTERING BAR** System realigns itself with the self-centering bar, maintaining a safe, clean look.

**ARCHITECTURAL ELEGANCE** The clear anodized cover plate finish provides a high-end appearance.

**COORDINATING CORNERS** Available with corner option for a complete solution.

### DETAILS

**MATERIAL** 6063-T6 Aluminum

**FINISH** Clear Anodized

#### MOVEMENT

- Thermal: Horizontal and Vertical
- Seismic: Lateral Shear

**MOUNTING** Surface

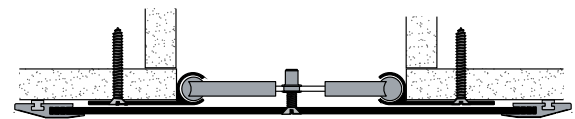
**JOINT SIZE** 4 inches to 24 inches

**LENGTH** 10 Linear Feet

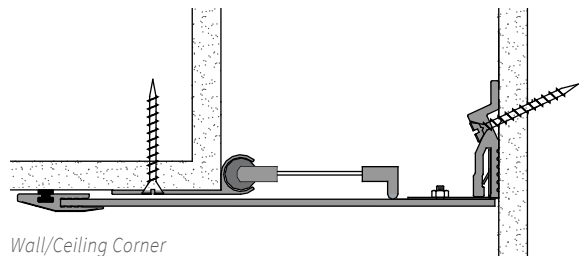
**APPLICATION** Interior

**INSTALLATION** Wall or Ceiling

**OPTIONS** Brass, Stainless Steel, Moisture Barrier, Fire Barrier



Wall-to-Wall



Wall/Ceiling Corner

### MODELS

#### WALL-TO-WALL

MODEL	JOINT SIZE AT MEAN T°F	SYSTEM WIDTH	TOTAL MOVEMENT
FCT-400	4" (102mm)	13.5" (343mm)	9.75" (248mm)
FCT-600	6" (152mm)	13.5" (343mm)	9.75" (248mm)
FCT-800	8" (203mm)	17.5" (445mm)	13.75" (349mm)
FCT-1000	10" (254mm)	21.5" (546mm)	17.25" (438mm)
FCT-1200	12" (305mm)	25.5" (648mm)	21" (533mm)
FCT-1800	18" (305mm)	37.5" (953mm)	33" (838mm)
FCT-2400	24" (610mm)	49.5" (1257mm)	45" (1143mm)

#### CORNER

MODEL	JOINT SIZE AT MEAN T°F	SYSTEM WIDTH	TOTAL MOVEMENT
FCT-400W	4" (102mm)	9.75" (248mm)	6.25" (159mm)
FCT-600W	6" (152mm)	9.75" (248mm)	6.25" (159mm)
FCT-800W	8" (203mm)	12.75" (324mm)	8.25" (210mm)
FCT-1000W	10" (254mm)	15.75" (400mm)	10.25" (260mm)
FCT-1200W	12" (305mm)	18.75" (476mm)	12.25" (311mm)
FCT-1800W	18" (305mm)	27.75" (705mm)	18.25" (464mm)
FCT-2400W	24" (610mm)	36.75" (984mm)	24.25" (616mm)

# Santoprene

## COMPRESSION SYSTEM (SAN)

Nystrom's Santoprene Compression Seal has many years in the field with long lasting and durable results. The color selections match many exterior building colors. The product ships in a continuous lengths to maximum limits.



### FEATURES

**COLOR COORDINATION** Available in four elastomeric seal color options: beige, white, gray or black.

**WATER RESISTANT** The system is designed to keep water out and dryness in.

**CONTINUOUS LENGTH** Product is shipped in maximum lengths to maintain a limited number of field splices.

### DETAILS

**MATERIAL** Santoprene

#### MOVEMENT

- Thermal: Horizontal and Vertical

**MOUNTING** Compression

**JOINT SIZE** 1 inch to 6 inches

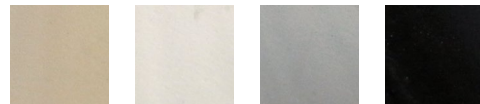
**LENGTH** Continuous

**APPLICATION** Interior or Exterior

**INSTALLATION** Wall or Ceiling

**OPTIONS** Seal Color, Fire Barrier

### SEAL COLORS

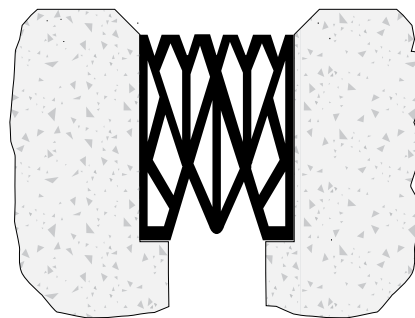


Beige

White

Gray

Black



### MODELS

MODEL	MINIMUM JOINT OPENING	MAXIMUM JOINT OPENING	SYSTEM DEPTH
SAN-100*	0.5" (13mm)	1.5" (38mm)	N/A
SAN-225	0.6875" (17mm)	1.94" (49mm)	1.88" (48mm)
SAN-250	1.06" (27mm)	2.13" (54mm)	2.38" (60mm)
SAN-300	1.44" (37mm)	2.56" (65mm)	2.53" (64mm)
SAN-400	1.25" (32mm)	3.39" (86mm)	3.19" (81mm)
SAN-500	1.44" (37mm)	4.25" (108mm)	3.63" (92mm)
SAN-600	1.81" (46mm)	5.12" (130mm)	4.63" (118mm)

Lubricant used for installation and assembly. Request part number 4050 for every 75 feet of material.

\* 10 foot lengths



# Elastomeric

## EXTERIOR WALL SYSTEM (EW/EWN)



This Elastomeric Exterior Wall System is a weather tight system that accommodates thermal and seismic movement. The visual seal matches many exterior building colors and the rear moisture barrier prevents exterior moisture or condensation from entering the wall cavity.

### FEATURES

**COLOR COORDINATION** Available in four elastomeric seal color options: beige, white, gray or black.

**WEATHER TIGHT** The combination of the visual seal and moisture barrier ensures the elements are kept outside.

**INTEGRATED MOISTURE BARRIER** Assembly of the moisture barrier is simplified with internal logs.

### DETAILS

**MATERIAL** 6063-T6 Aluminum

**FINISH** Mill

#### MOVEMENT

- Thermal: Horizontal and Vertical
- Seismic: Lateral Shear

**MOUNTING** Recess

**JOINT SIZE** 2 inches to 24 inches

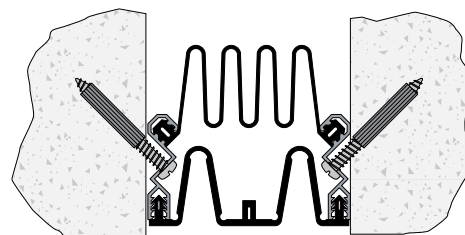
**LENGTH** 10 Linear Feet

**APPLICATION** Exterior

**INSTALLATION** Wall

**OPTIONS** Seal Color, Fire Barrier

### SEAL COLORS



### MODELS

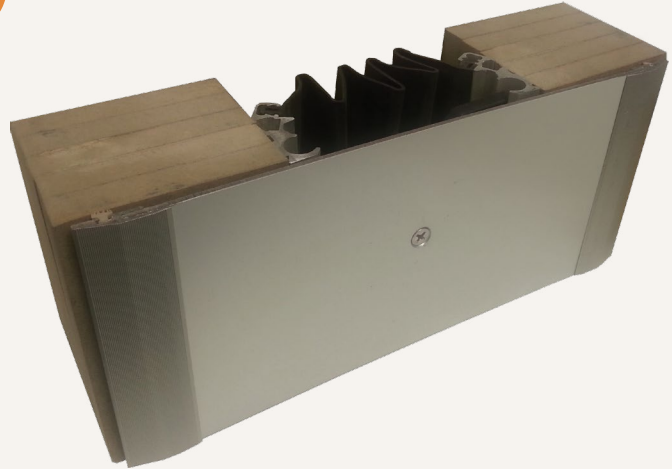
MODEL	INSTALLATION	JOINT SIZE AT MEAN T°F	SYSTEM WIDTH	TOTAL MOVEMENT
EWN-200MB	Wall-to-Wall	2" (51mm)	2" (51mm)	2.63" (67mm)
EWN-300MB	Wall-to-Wall	3" (76mm)	3" (76mm)	5.13" (130mm)
EWN-400MB	Wall-to-Wall	4" (102mm)	4" (102mm)	4.75" (121mm)
EWN-500MB	Wall-to-Wall	5" (127mm)	5" (127mm)	6.75" (171mm)
EWN-600MB	Wall-to-Wall	6" (152mm)	6" (152mm)	9.5" (241mm)
EW-800MB	Wall-to-Wall	8" (203mm)	8" (203mm)	9.63" (245mm)
EW-900MB	Wall-to-Wall	9" (229mm)	9" (229mm)	15.38" (391mm)

MODEL	INSTALLATION	JOINT SIZE AT MEAN T°F	SYSTEM WIDTH	TOTAL MOVEMENT
EW-1000MB	Wall-to-Wall	10" (254mm)	10" (254mm)	13.63" (346mm)
EW-1200MB	Wall-to-Wall	12" (305mm)	12" (305mm)	19.13" (486mm)
EW-1500MB	Wall-to-Wall	15" (381mm)	15" (381mm)	20.25" (514mm)
EW-1600MB	Wall-to-Wall	16" (406mm)	16" (406mm)	19" (483mm)
EW-1800MB	Wall-to-Wall	18" (457mm)	18" (457mm)	28.5" (724mm)
EW-2000MB	Wall-to-Wall	20" (508mm)	20" (508mm)	27" (686mm)
EW-2400MB	Wall-to-Wall	24" (610mm)	24" (610mm)	38" (965mm)

# Seismic Security

## EXTERIOR WALL SYSTEM (RJX/W)

The seismic security exterior application provides an aluminum cover plate for security and includes a moisture barrier for added water and air protection.



### FEATURES

**SEISMIC MOVEMENT** System realigns itself with the self-centering bar, maintaining a safe, clean look.

**WEATHER TIGHT** The integrated moisture barrier will keep the elements out and the comfort in.

**ARCHITECTURAL ELEGANCE** The clear anodized cover plate finish provides a high-end appearance.

### DETAILS

**MATERIAL** 6063-T6 Aluminum

**FINISH** Clear Anodized

#### MOVEMENT

- Thermal: Horizontal and Vertical
- Seismic: Lateral Shear

**MOUNTING** Surface

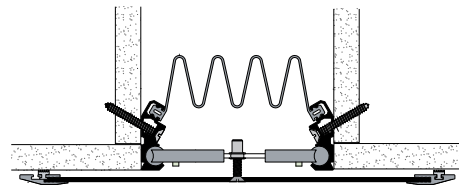
**JOINT SIZE** 6 inches to 24 inches

**LENGTH** 10 Linear Feet

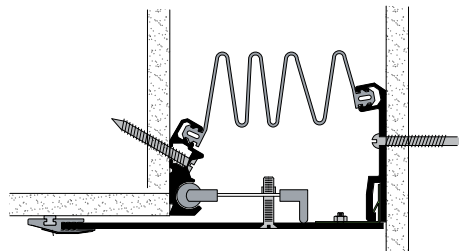
**APPLICATION** Interior or Exterior

**INSTALLATION** Wall or Ceiling

**OPTIONS** Brass, Stainless Steel, Fire Barrier



Wall-to-Wall



Wall/Ceiling Corner

### MODELS

#### WALL-TO-WALL

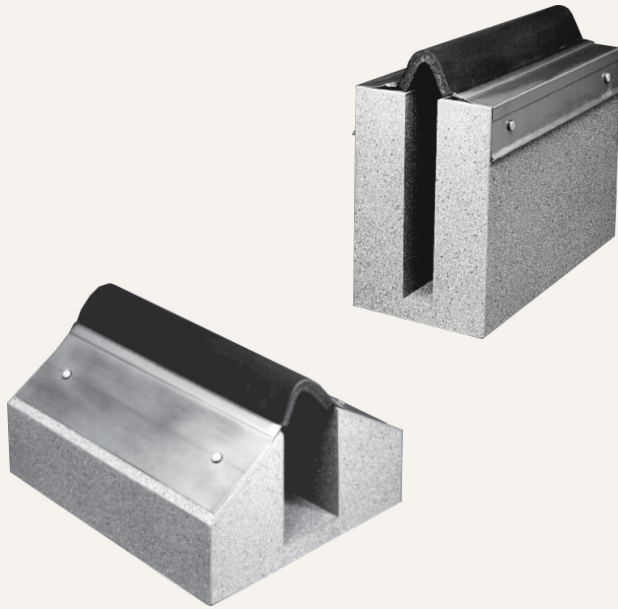
MODEL	JOINT SIZE AT MEAN T°F	SYSTEM WIDTH	TOTAL MOVEMENT
RJX-600	6" (25mm)	13.5" (343mm)	9.75" (248mm)
RJX-800	8" (51mm)	17.5" (445mm)	13.75" (349mm)
RJX-1000	10" (76mm)	21.5" (546mm)	17.25" (438mm)
RJX-1200	12" (305mm)	25.5" (648mm)	21" (533mm)
RJX-1800	18" (457mm)	37.5" (953mm)	33" (838mm)
RJX-2400	24" (610mm)	49.5" (1257mm)	45" (1143mm)

#### CORNER

MODEL	JOINT SIZE AT MEAN T°F	SYSTEM WIDTH	TOTAL MOVEMENT
RJX-600W	6" (25mm)	9.75" (248mm)	6.25" (159mm)
RJX-800W	8" (51mm)	12.75" (324mm)	8.25" (210mm)
RJX-1000W	10" (254mm)	15.75" (400mm)	10.25" (260mm)
RJX-1200W	12" (305mm)	18.75" (476mm)	12.25" (311mm)
RJX-1800W	18" (457mm)	27.75" (705mm)	18.25" (434mm)
RJX-2400W	24" (610mm)	36.75" (984mm)	24.25" (616mm)

# Roof Bellow

## SYSTEM (EEJ/W & ECF/W)



Nystrom's Roof Bellows System is an effective, flexible joint closure for a wide variety of standard and special applications. The EEJ and ECF covers are 60-mil thick, reinforced EPDM bellows widely used in roof to roof and roof to wall cant or curb applications.

### FEATURES

**EASY TRANSITIONS** Water and weather tight factory manufactured transitions available.

**FLANGE STYLE** Flange is available in galvanized steel, copper, stainless steel and aluminum.

**OPTIONAL CURB APPLICATION** Specify model ECF for flat roof systems when a curb is required.

### DETAILS

**MATERIAL** EPDM Bellows w/Galvanized Steel Flange

#### MOVEMENT

- Thermal: Horizontal and Vertical
- Seismic: Lateral Shear

**MOUNTING** Surface

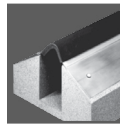
**JOINT SIZE** 1 inch to 20 inches

**LENGTH** 10 Linear Feet, 50 Linear Feet or 100 Linear Feet

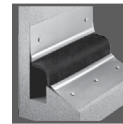
**APPLICATION** Exterior

**INSTALLATION** Roof

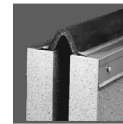
### PROFILES



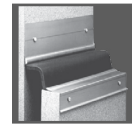
Cant  
Roof-to-Roof



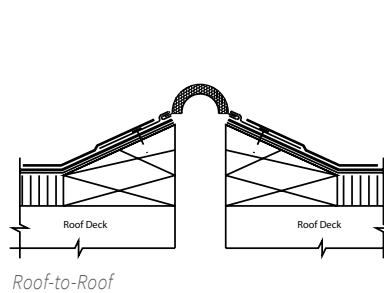
Cant  
Roof-to-Wall



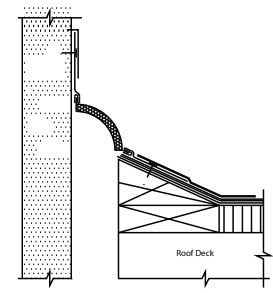
Curb  
Roof-to-Roof



Curb  
Roof-to-Wall



Roof-to-Roof



Roof-to-Soffit

### MODELS

ROOF-TO-ROOF					
MODEL CANT	MODEL CURB	JOINT SIZE AT MEAN T°F	MODEL CANT	MODEL CURB	JOINT SIZE AT MEAN T°F
EEJ-100	ECF-100	1" (25mm)	EEJ-800	ECF-800	8" (203mm)
EEJ-200	ECF-200	2" (51mm)	EEJ-1000	ECF-1000	10" (254mm)
EEJ-300	ECF-300	3" (76mm)	EEJ-1200	ECF-1200	12" (305mm)
EEJ-400	ECF-400	4" (102mm)	EEJ-1600	ECF-1600	16" (406mm)
EEJ-500	ECF-500	5" (127mm)	EEJ-1800	ECF-1800	18" (457mm)
EEJ-600	ECF-600	6" (152mm)	EEJ-2000	ECF-2000	20" (508mm)
EEJ-700	ECF-700	7" (178mm)			

ROOF-TO-WALL					
MODEL CANT	MODEL CURB	JOINT SIZE AT MEAN T°F	MODEL CANT	MODEL CURB	JOINT SIZE AT MEAN T°F
EEJ-100W	ECF-100W	1" (25mm)	EEJ-800W	ECF-800W	8" (203mm)
EEJ-200W	ECF-200W	2" (51mm)	EEJ-1000W	ECF-1000W	10" (254mm)
EEJ-300W	ECF-300W	3" (76mm)	EEJ-1200W	ECF-1200W	12" (305mm)
EEJ-400W	ECF-400W	4" (102mm)	EEJ-1600W	ECF-1600W	16" (406mm)
EEJ-500W	ECF-500W	5" (127mm)	EEJ-1800W	ECF-1800W	18" (457mm)
EEJ-600W	ECF-600W	6" (152mm)	EEJ-2000W	ECF-2000W	20" (508mm)
EEJ-700W	ECF-700W	7" (178mm)			

# Roof Continuous

## CURB BELLOW SYSTEM (EWCF/W)

Nystrom's Continuous Roof Curb Bellows System is an effective, flexible joint closure for a wide variety of standard and special applications. The system is designed for a continuous length for limited or no splices along the joint. The EWCF covers are 60-mil thick, reinforced EPDM bellows widely used in curb applications.



### FEATURES

**CURB APPLICATION** Designed for flat roof systems when a curb is required.

**CONTINUOUS LENGTH** For straight runs, up to 100 linear feet, no splices are required. Eliminates opportunities for water leaks at splice points.

**EASY TRANSITIONS** Water and weather tight factory manufactured transitions available.

### DETAILS

**MATERIAL** EPDM Membrane

#### MOVEMENT

- Thermal: Horizontal and Vertical
- Seismic: Lateral Shear

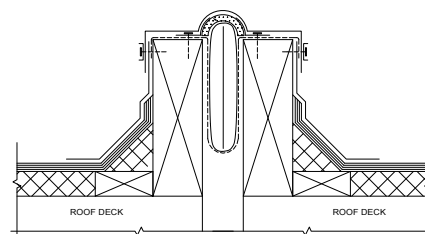
**MOUNTING** Surface

**JOINT SIZE** 1 inch to 20 inches

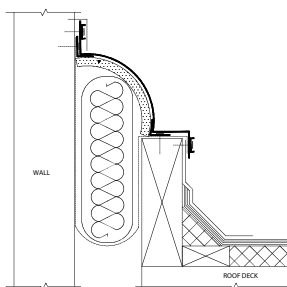
**LENGTH** 50 or 100 Linear Foot Roll

**APPLICATION** Exterior

**INSTALLATION** Roof



Roof-to-Roof



Roof-to-Wall

### MODELS

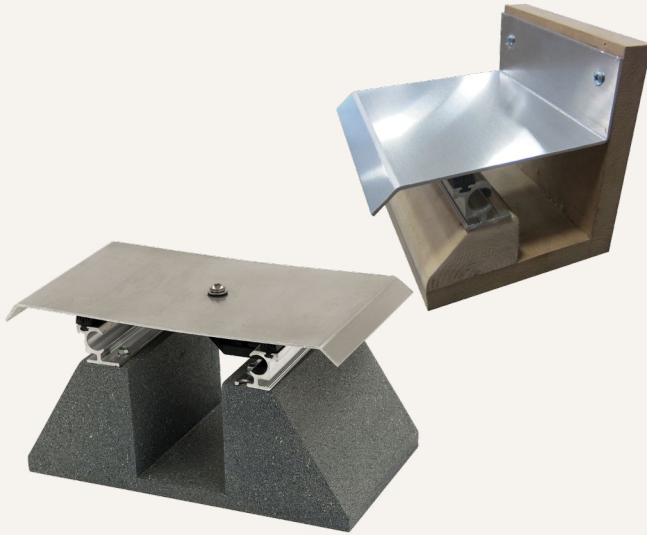
#### ROOF-TO-ROOF

MODEL	JOINT SIZE AT MEAN T°F	MODEL	JOINT SIZE AT MEAN T°F
EWCF-100	1" (25mm)	EWCF-800	8" (203mm)
EWCF-200	2" (51mm)	EWCF-1000	10" (254mm)
EWCF-300	3" (76mm)	EWCF-1200	12" (305mm)
EWCF-400	4" (102mm)	EWCF-1600	16" (406mm)
EWCF-500	5" (127mm)	EWCF-1800	18" (457mm)
EWCF-600	6" (152mm)	EWCF-2000	20" (508mm)
EWCF-700	7" (178mm)		

#### ROOF-TO-WALL

MODEL	JOINT SIZE AT MEAN T°F	MODEL	JOINT SIZE AT MEAN T°F
EWCF-100W	1" (25mm)	EWCF-800W	8" (203mm)
EWCF-200W	2" (51mm)	EWCF-1000W	10" (254mm)
EWCF-300W	3" (76mm)	EWCF-1200W	12" (305mm)
EWCF-400W	4" (102mm)	EWCF-1600W	16" (406mm)
EWCF-500W	5" (127mm)	EWCF-1800W	18" (457mm)
EWCF-600W	6" (152mm)	EWCF-2000W	20" (508mm)
EWCF-700W	7" (178mm)		

# Architectural ROOF SYSTEM (RJS/W)



This Architectural Roof System is designed for seismic and thermal movement and handles ice, snow loads, and occasional maintenance foot traffic on flat and sloped roofs. The integral weather seals and moisture barriers keep outside elements from penetrating the structural opening and interior areas.

## FEATURES

**SEISMIC MOVEMENT** Designed with a seismic self-centering bar to keep the joint opening covered during a movement cycle providing a safe and clean appearance.

**WEATHER TIGHT** Engineered with an integrated moisture barrier for top quality water diversion with easy installation.

**ARCHITECTURAL ELEGANCE** The cover plate provides a high-end appearance.

## DETAILS

**MATERIAL** 6063-T6 Aluminum

**FINISH** Mill

### MOVEMENT

- Thermal: Horizontal and Vertical
- Seismic: Lateral Shear

**MOUNTING** Surface

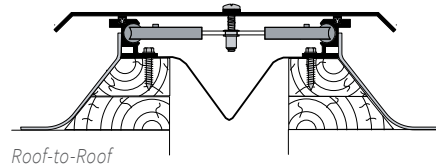
**JOINT SIZE** 2 inches to 24 inches

**LENGTH** 10 Linear Feet

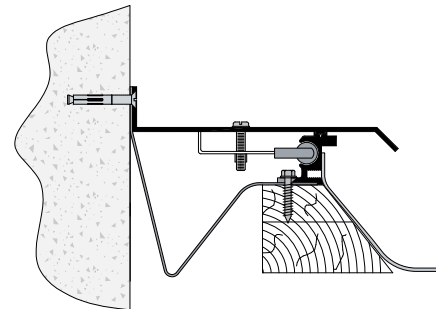
**APPLICATION** Exterior

**INSTALLATION** Roof

**OPTIONS** Fire Barrier



Roof-to-Roof



Roof-to-Wall Corner

## MODELS

### ROOF-TO-ROOF

MODEL	JOINT SIZE AT MEAN T°F	SYSTEM WIDTH	TOTAL MOVEMENT
RJS-200	2" (51mm)	8" (203mm)	3" (76mm)
RJS-400	4" (102mm)	11" (279mm)	6" (152mm)
RJS-600	6" (152mm)	14" (356mm)	9" (229mm)
RJS-800	8" (203mm)	9" (229mm)	12" (305mm)
RJS-1000	10" (254mm)	20" (508mm)	15" (381mm)
RJS-1200	12" (305mm)	23" (584mm)	18" (457mm)
RJS-1800	18" (457mm)	32" (813mm)	27" (686mm)
RJS-2400	24" (610mm)	41" (1041mm)	36" (914mm)

### ROOF-TO-ROOF

MODEL	JOINT SIZE AT MEAN T°F	SYSTEM WIDTH	TOTAL MOVEMENT
RJS-200W	2" (51mm)	5.5" (140mm)	3" (76mm)
RJS-400W	4" (102mm)	8.5" (216mm)	6" (152mm)
RJS-600W	6" (152mm)	11.5" (292mm)	9" (229mm)
RJS-800W	8" (203mm)	14.5" (368mm)	12" (305mm)
RJS-1000W	10" (254mm)	17.5" (445mm)	9.75" (248mm)
RJS-1200W	12" (305mm)	20.5" (521mm)	11.75" (298mm)
RJS-1800W	18" (457mm)	29.5" (749mm)	17.75" (451mm)
RJS-2400W	24" (610mm)	38.5" (978mm)	23.75" (603mm)

# Architectural

## ROOF CURB SYSTEM (RJF/W)

Nystrom's Architectural Roof Curb System is designed to handle ice, snow loads, and occasional maintenance foot traffic. Integral weather seals and moisture barriers keep outside elements from penetrating the structural opening and interior areas. This is an all aluminum system engineered for flat and sloped roofs that are subject to thermal and seismic movement.



### FEATURES

**INTEGRATED FLASHING** System includes integrated flashing for assembly before membrane is installed.

**SEISMIC MOVEMENT** Designed with a seismic self-centering bar to keep the joint opening covered during a movement cycle providing a safe and clean appearance.

**MOISTURE BARRIER** Engineered with an integrated moisture barrier for water diversion with easy installation.

### DETAILS

**MATERIAL** 6063-T6 Aluminum

**FINISH** Mill

#### MOVEMENT

- Thermal: Horizontal and Vertical
- Seismic: Lateral Shear

**MOUNTING** Surface

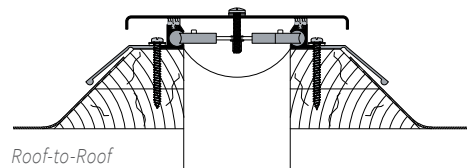
**JOINT SIZE** 6 inches to 24 inches

**LENGTH** 10 Linear Feet

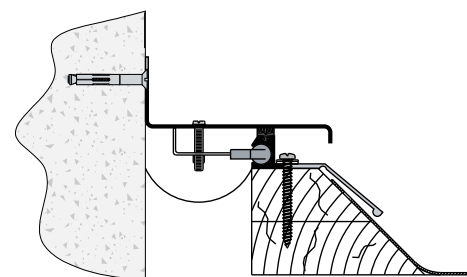
**APPLICATION** Exterior

**INSTALLATION** Roof

**OPTIONS** Fire Barrier



Roof-to-Roof



Roof-to-Wall Corner

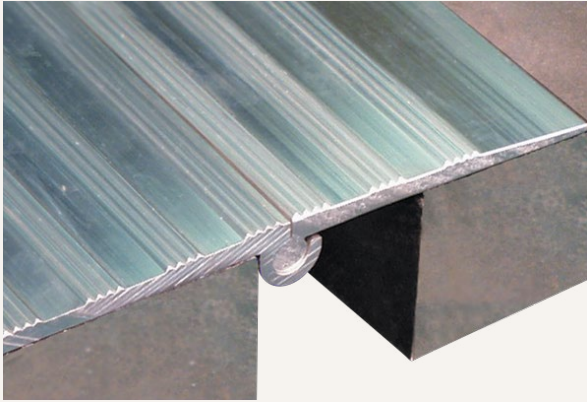
### MODELS

#### ROOF-TO-ROOF

MODEL	JOINT SIZE AT MEAN T°F	SYSTEM WIDTH	TOTAL MOVEMENT
RJF-200	2" (51mm)	8" (203mm)	3" (76mm)
RJF-400	4" (102mm)	11" (279mm)	6" (152mm)
RJF-600	6" (152mm)	14" (356mm)	9" (229mm)
RJF-800	8" (203mm)	9" (229mm)	12" (305mm)
RJF-1000	10" (254mm)	20" (508mm)	15" (381mm)
RJF-1200	12" (305mm)	23" (584mm)	18" (457mm)
RJF-1800	18" (457mm)	32" (813mm)	27" (686mm)
RJF-2400	24" (610mm)	41" (1041mm)	36" (914mm)

#### ROOF-TO-WALL

MODEL	JOINT SIZE AT MEAN T°F	SYSTEM WIDTH	TOTAL MOVEMENT
RJF-200W	2" (51mm)	5.5" (140mm)	3" (76mm)
RJF-400W	4" (102mm)	8.5" (216mm)	6" (152mm)
RJF-600W	6" (152mm)	11.5" (292mm)	9" (229mm)
RJF-800W	8" (203mm)	14.5" (368mm)	12" (305mm)
RJF-1000W	10" (254mm)	17.5" (445mm)	9.75" (248mm)
RJF-1200W	12" (305mm)	20.5" (521mm)	11.75" (298mm)
RJF-1800W	18" (457mm)	29.5" (749mm)	17.75" (451mm)
RJF-2400W	24" (610mm)	38.5" (978mm)	23.75" (603mm)



# Heavy Duty

## HINGED SYSTEM (PD/W)

This Parking Deck system is rated for low speed vehicular traffic and commonly placed in parking deck applications. The integral hinge allows for vertical offset up to an inch and a half.

### FEATURES

**COORDINATING CORNERS** Available with corner option for a complete floor solution.

**TRAFFIC LOAD** Vehicular rated for slow vehicular traffic in parking decks, garages and ports.

**DURABLE** Constructed with a heavy-duty, hinged, cover plate with limited vertical movement.

### DETAILS

**MATERIAL** 6063-T6 Aluminum

**FINISH** Mill

**MOVEMENT**

- Thermal: Horizontal and Vertical

**MOUNTING** Surface

**JOINT SIZE** 2 inches to 6 inches

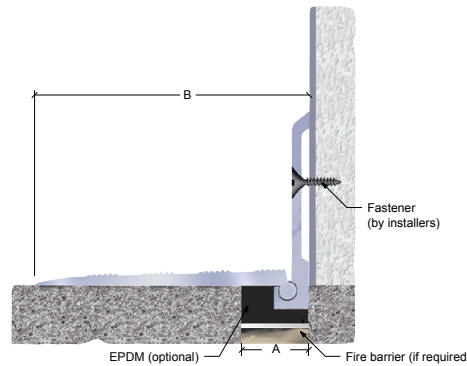
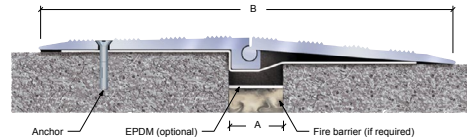
**LENGTH** 10 Linear Feet

**APPLICATION** Interior or Exterior

**LOAD** Vehicle

**INSTALLATION** Floor or Deck

**OPTIONS** Moisture Barrier, Fire Barrier



### MODELS

**DECK-TO-DECK**

MODEL	JOINT SIZE AT MEAN T°F	SYSTEM WIDTH	TOTAL MOVEMENT
PD-200	2" (50mm)	8" (203mm)	2" (50mm)
PD-300	3" (75mm)	13.125" (333mm)	4" (100mm)
PD-400	4" (100mm)	16" (406mm)	5.5" (140mm)
PD-600	6" (150mm)	19.8" (503mm)	8" (203mm)

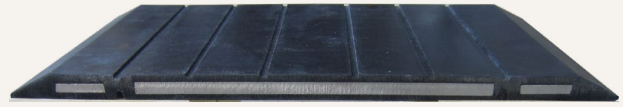
**DECK-TO-WALL/CORNER**

MODEL	JOINT SIZE AT MEAN T°F	SYSTEM WIDTH	TOTAL MOVEMENT
PD-200W	2" (50mm)	5" (127mm)	2.5" (64mm)
PD-300W	3" (75mm)	7" (178mm)	3.5" (87mm)
PD-400W	4" (100mm)	11" (279mm)	4.5" (112mm)

# Rubber Coated

## HEAVY DUTY HINGE SYSTEM (RCP)

Nystrom's RCP series Rubber Coated Heavy-Duty Hinge System is rated for low speed vehicular traffic but is also commonly used on pedestrian walkways. The rubber coating with rubber hinges gives a quieter ride. This is the clear choice when a premium plate is required.



### FEATURES

**SOUND DAMPENER** The rubber coating with tapered edges assists in reducing noise from vehicle tires.

**HEAVY DUTY** Designed for low speed vehicular traffic and is commonly used in parking ramps and across walkways.

**VERTICAL MOVEMENT** This surface mounted system is designed with a hinged system to allow for vertical offset.

### DETAILS

**MATERIAL** 6063-T6 Aluminum

**FINISH** Rubber Coated

**MOVEMENT**

- Thermal: Horizontal and Vertical

**MOUNTING** Surface

**JOINT SIZE** 6 inches or 10 inches

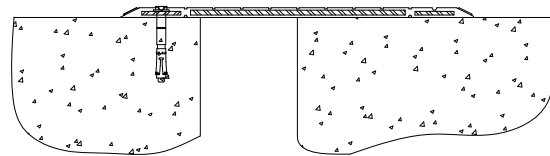
**LENGTH** 6 linear feet

**APPLICATION** Exterior

**LOAD** Vehicle

**INSTALLATION** Floor or Deck

**OPTIONS** Moisture Barrier, Fire Barrier



Floor-to-Floor

### MODELS

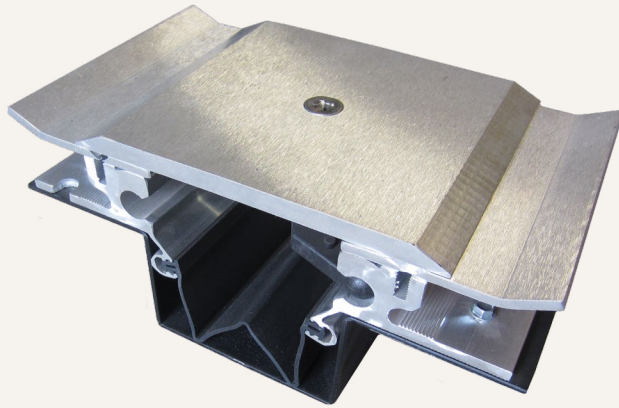
MODEL	JOINT SIZE AT MEAN T°F	SYSTEM WIDTH	TOTAL MOVEMENT
RCP-600	6" (152mm)	12" (305mm)	6" (152mm)
RCP-1000	10" (254mm)	18" (457mm)	6" (152mm)

Larger sizes available upon request.



# Heavy Duty

## SEISMIC RECESSED SYSTEM (PTX/W)



This Heavy Duty Seismic Recessed System can accommodate larger openings with multi-directional movement requirements. An integral moisture barrier keeps the weather out.

### FEATURES

**COORDINATING CORNERS** Available with corner option for a complete floor solution.

**WATER-RESISTANT** Engineered with an integrated moisture barrier for top quality water diversion with easy installation.

**FLUSH TO SURFACE** Designed with a smooth transition from deck to substrate.

### DETAILS

**MATERIAL** 6063-T6 Aluminum

**FINISH** Mill

#### MOVEMENT

- Thermal: Horizontal and Vertical
- Seismic

**MOUNTING** Block Out

**JOINT SIZE** 2 inches to 18 inches

**LENGTH** 10 Linear Feet

**APPLICATION** Exterior

**LOAD** Vehicle

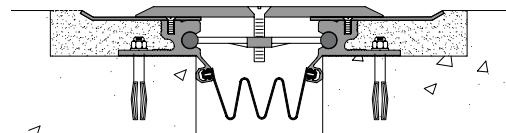
**INSTALLATION** Floor or Deck

**OPTIONS** Fire Barrier

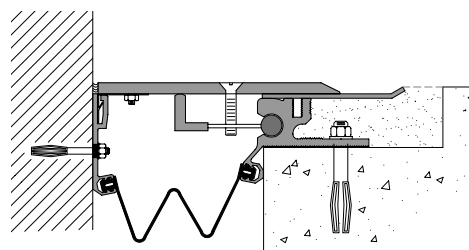
### MODELS

#### DECK-TO-DECK

MODEL	JOINT SIZE AT MEAN T°F	SYSTEM WIDTH	TOTAL MOVEMENT
PTX-200	2" (50mm)	6.25" (159mm)	1.625" (41mm)
PTX-400	4" (102mm)	10.25" (260mm)	4.625" (117mm)
PTX-600	6" (152mm)	14.25" (362mm)	7.75" (197mm)
PTX-850	8" (203mm)	18.25" (464mm)	10.75" (273mm)
PTX-1000	10" (254mm)	22.25" (565mm)	13.625" (346mm)
PTX-1200	12" (305mm)	26.25" (667mm)	16.625" (422mm)
PTX-1500	15" (381mm)	32.75" (832mm)	21.625" (549mm)
PTX-1800	18" (457mm)	38.25" (972mm)	25.625" (657mm)



Floor-to-Floor



Floor-to-Wall/Corner

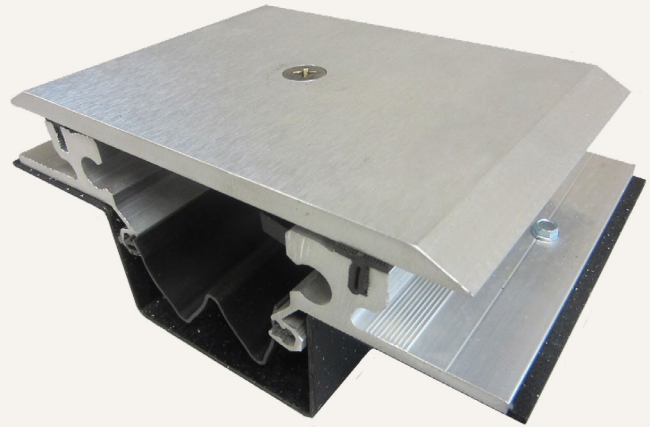
#### DECK-TO-WALL/CORNER

MODEL	JOINT SIZE AT MEAN T°F	SYSTEM WIDTH	TOTAL MOVEMENT
PTX-200W	2" (50mm)	4.125" (104mm)	1.25" (32mm)
PTX-400W	4" (102mm)	7.125" (181mm)	3.75" (95mm)
PTX-600W	6" (152mm)	10.125" (257mm)	6.25" (159mm)
PTX-850W	8" (203mm)	13.125" (333mm)	8.75" (222mm)
PTX-1000W	10" (254mm)	16.125" (410mm)	6.625" (169mm)
PTX-1200W	12" (305mm)	19.125" (486mm)	8.125" (206mm)
PTX-1500W	15" (381mm)	23.875" (606mm)	10.625" (270mm)
PTX-1800W	18" (457mm)	28.125" (714mm)	12.625" (321mm)

# Heavy Duty

## SEISMIC SYSTEM (PTS/W)

The Heavy Duty Seismic System can accommodate larger openings with multi-directional movement requirements. An integral moisture barrier keeps the weather out.



### FEATURES

**COORDINATING CORNERS** Available with corner option for a complete floor solution.

**WATER-RESISTANT** Engineered with an integrated moisture barrier for water diversion with easy installation.

**VEHICLE LOAD** This heavy-duty system is designed for low speed vehicular traffic and is commonly used in parking ramps and across walkways.

### DETAILS

**MATERIAL** 6063-T6 Aluminum

**FINISH** Mill

#### MOVEMENT

- Thermal: Horizontal and Vertical
- Seismic

**MOUNTING** Block Out

**JOINT SIZE** 2 inches to 18 inches

**LENGTH** 10 Linear Feet

**APPLICATION** Exterior

**LOAD** Vehicle

**INSTALLATION** Floor or Deck

**OPTIONS** Fire Barrier

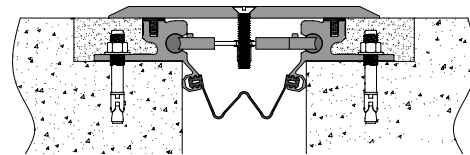
### MODELS

#### DECK-TO-DECK

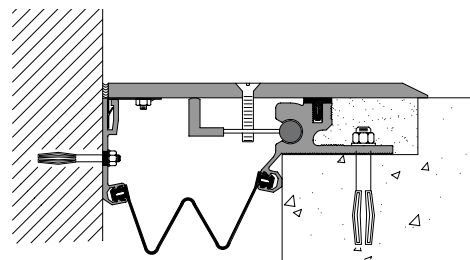
MODEL	JOINT SIZE AT MEAN T°F	SYSTEM WIDTH	TOTAL MOVEMENT
PTS-200	2" (50mm)	6.25" (159mm)	1.625" (41mm)
PTS-400	4" (102mm)	10.25" (260mm)	4.625" (117mm)
PTS-600	6" (152mm)	14.25" (362mm)	7.75" (197mm)
PTS-850	8" (203mm)	18.25" (464mm)	10.75" (273mm)
PTS-1000	10" (254mm)	22.25" (565mm)	13.625" (346mm)
PTS-1200	12" (305mm)	26.25" (667mm)	16.625" (422mm)
PTS-1500	15" (381mm)	32.75" (832mm)	21.625" (549mm)
PTS-1800	18" (457mm)	38.25" (972mm)	25.625" (657mm)

#### DECK-TO-WALL/CORNER

MODEL	JOINT SIZE AT MEAN T°F	SYSTEM WIDTH	TOTAL MOVEMENT
PTS-200W	2" (50mm)	4.125" (104mm)	1.25" (32mm)
PTS-400W	4" (102mm)	7.125" (181mm)	3.75" (95mm)
PTS-600W	6" (152mm)	10.125" (257mm)	6.25" (159mm)
PTS-850W	8" (203mm)	13.125" (333mm)	8.75" (222mm)
PTS-1000W	10" (254mm)	16.125" (410mm)	6.625" (169mm)
PTS-1200W	12" (305mm)	19.125" (486mm)	8.125" (206mm)
PTS-1500W	15" (381mm)	23.875" (606mm)	10.625" (270mm)
PTS-1800W	18" (457mm)	28.125" (714mm)	12.625" (321mm)



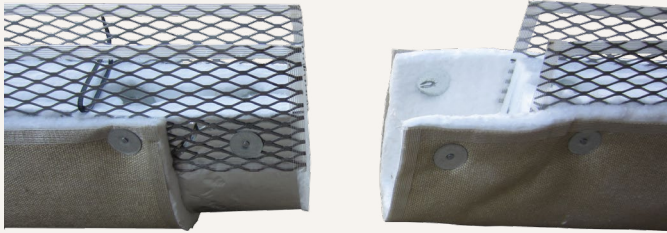
Floor-to-Floor



Floor-to-Wall/Corner

# Seismic Floor

## FIRE BARRIER SYSTEM (FLF/W)



Nystrom's Seismic Fire Barrier System is recommended for openings up to 32 inches with seismic activity. The system is rated for 2 or 3 hour rating with factory made transitions for out of the box installation.

### FEATURES

**FIRE-RATED** Constructed of fire retardant materials to contain fires from spreading thru joint openings. Available in 2 or 3 hour ratings.

**EASY INSTALLATION** The system installs with tongue and groove process with limited or no caulking requirements.

**FACTORY TRANSITIONS** Available option for fire-rated factory transitions; refer to table.

### DETAILS

#### MOVEMENT

- Thermal: Horizontal and Vertical
- Seismic

**MOUNTING** Recessed

**JOINT SIZE** 2 inches to 20 inches

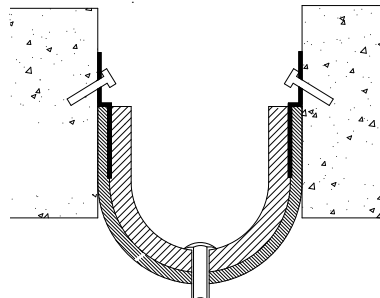
**LENGTH** 10 Linear Feet

**FIRE-RATING** 2 hour or 3 hour

**APPLICATION** Interior

**INSTALLATION** Floor

**COMPLIANCE** UL 2079, ASTM E-1966, UL air leak, ASTM E 1399 cycling, hose stream



MODEL	DESCRIPTION
-3WAY	3-Way T
-4WAY	4-Way T
FLH-	Horizontal Directional Change
FLV90	90° Vertical Transition
FLH90	90° Horizontal Transition

### MODELS

#### FLOOR-TO-FLOOR OR WALL-TO-WALL

MODEL	JOINT SIZE AT MEAN T°F	MODEL	JOINT SIZE AT MEAN T°F
FLF-200	2" (51mm)	FLF-1000	10" (254mm)
FLF-300	3" (76mm)	FLF-1200	12" (305mm)
FLF-400	4" (102mm)	FLF-1400	14" (354mm)
FLF-500	5" (127mm)	FLF-1600	16" (406mm)
FLF-600	6" (152mm)	FLF-1800	18" (457mm)
FLF-800	8" (203mm)	FLF-2000	20" (508mm)

#### CORNER

MODEL	JOINT SIZE AT MEAN T°F	MODEL	JOINT SIZE AT MEAN T°F
FLF-200W	2" (51mm)	FLF-1000W	10" (254mm)
FLF-300W	3" (76mm)	FLF-1200W	12" (305mm)
FLF-400W	4" (102mm)	FLF-1400W	14" (354mm)
FLF-500W	5" (127mm)	FLF-1600W	16" (406mm)
FLF-600W	6" (152mm)	FLF-1800W	18" (457mm)
FLF-800W	8" (203mm)	FLF-2000W	20" (508mm)

# Seismic Wall

## FIRE BARRIER SYSTEM (FLW)

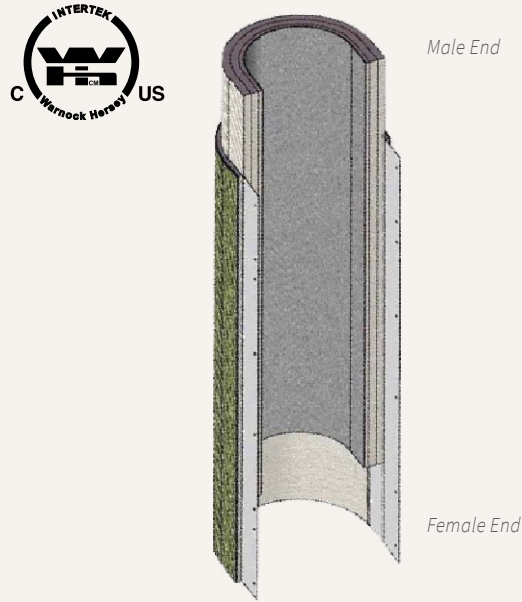
Nystrom's Seismic Fire Barrier System is recommended for openings up to 32 inches with seismic activity. The system is rated for 2, 3 and 4 hour rating with factory made transitions when required for out of the box installation.

### FEATURES

**FIRE-RATED** Constructed of fire retardant materials to contain fires from spreading thru joint openings. Available in 2, 3 or 4 hour ratings.

**LARGE OPENINGS** Available up to 32 inch opening for larger requirements.

**EASY INSTALLATION** The system installs with tongue and groove process with limited or no caulking requirements.



### DETAILS

#### MOVEMENT

- Thermal: Horizontal and Vertical
- Seismic: Lateral Shear

**MOUNTING** Recessed

**JOINT SIZE** 2 inches to 20 inches

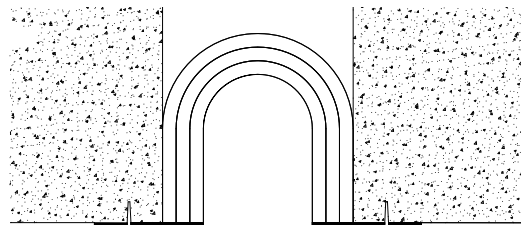
**LENGTH** 10 Linear Feet

**FIRE-RATING** 2 hour, 3 hour or 4 hour

**APPLICATION** Interior

**INSTALLATION** Wall or Ceiling

**COMPLIANCE** UL 2079, ASTM E-1966, UL air leak, ASTM E 1399 cycling, hose stream

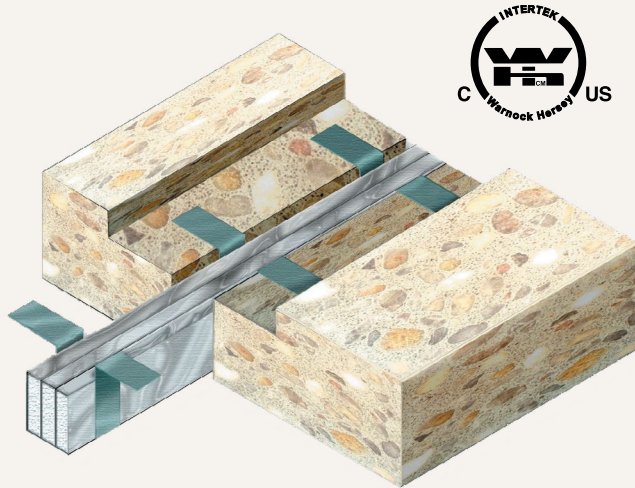


### MODELS

MODEL	JOINT SIZE AT MEAN T°F	MODEL	JOINT SIZE AT MEAN T°F
FLW-200	2" (51mm)	FLW-1000	10" (254mm)
FLW-300	3" (76mm)	FLW-1200	12" (254mm)
FLW-400	4" (102mm)	FLW-1400	14" (354mm)
FLW-500	5" (127mm)	FLW-1600	16" (406mm)
FLW-600	6" (152mm)	FLW-1800	18" (457mm)
FLW-800	8" (203mm)	FLW-2000	20" (508mm)

# Fire Barrier

## COMPRESSION SYSTEM (HTS/VTS)



This Fire Barrier Compression System is recommended for nominal openings with thermal movement both vertical and horizontal application. This system is meant for openings with a maximum of 4 inches nominal.

### FEATURES

**FIRE-RATED** Warnock-Hersey listed fire barrier - constructed of fire retardant materials to contain fires from spreading thru joint openings.

**LIGHTWEIGHT** No metal flanges on this compression seal fire barrier reducing the overall weight.

**QUICK SHIP** Shorter lead time than most fire barriers, reduces wait time in the field.

### DETAILS

#### MOVEMENT

- Thermal: Horizontal and Vertical

**MOUNTING** Recessed

**JOINT SIZE** 1 inch to 4 inches

**LENGTH** 25 linear foot rolls

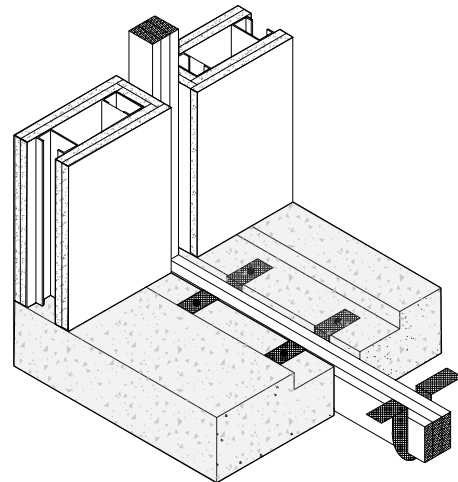
**FIRE-RATING** 2 hour

**APPLICATION** Interior

**INSTALLATION** Horizontal or Vertical

**COMPLIANCE** ASTM E119, UL 263, NFPA 251

**OPTIONS** 3-Hour Fire-Rating (horizontal only)



### MODELS

#### HORIZONTAL

MODEL	JOINT SIZE AT MEAN T°F	FIRE-RATING
HTS-1-2	1" (25mm)	2-Hour
HTS-2-2	2" (51mm)	
HTS-3-2	3" (76mm)	
HTS-4-2	4" (102mm)	

#### VERTICAL

MODEL	JOINT SIZE AT MEAN T°F	FIRE-RATING
VTS-1-2	1" (25mm)	2-Hour
VTS-2-2	2" (51mm)	
VTS-3-2	3" (76mm)	
VTS-4-2	4" (102mm)	

# Materials



Aluminum  
Mill



Aluminum  
Clear  
Anodized



Stainless Steel  
Brush Finish



Brass  
Brush Finish

Colors shown give only an indication of shade. Samples are available upon request.

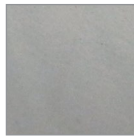
# Seal Colors



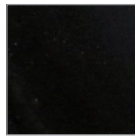
Beige



White



Gray



Black

Colors shown give only an indication of shade. Samples are available upon request.

# Moisture Barriers

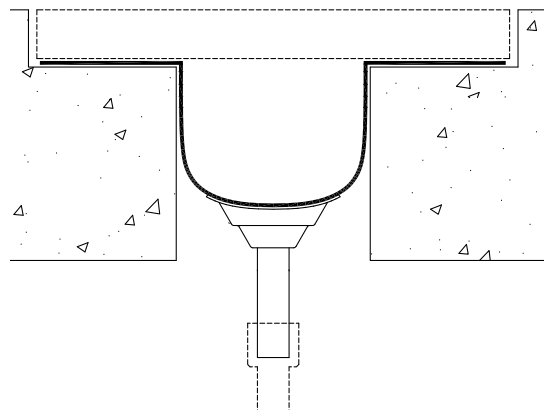
## DETAILS

**MATERIAL** 60A Durometer Neoprene

**OPTIONS** Drain Tube Assembly

## MODELS

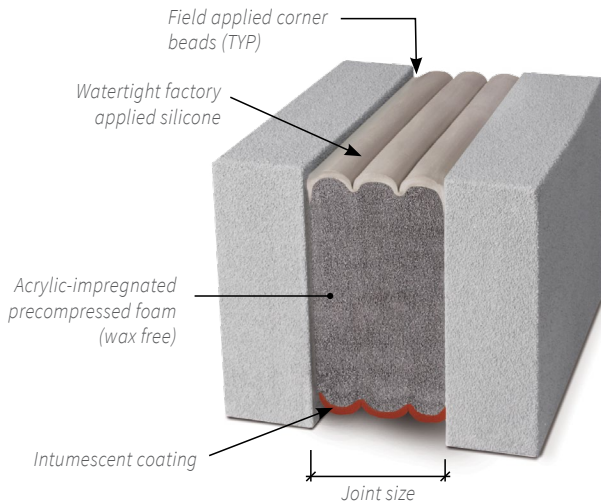
MODEL	NOMINAL JOINT OPENING	ROLL SIZE	WIDTH (INCH)	THICKNESS (INCH)
21939	1"	100 Feet	7"	.062"
21940		50 Feet		
21941	2" to 3"	100 Feet	12"	
21942		50 Feet		
21943	4" to 6"	100 Feet	18"	
21944		50 Feet		
21945	7" to 10"	100 Feet	24"	
21946		50 Feet		





# Expansion Joint

## COMPRESSION SEALS



### AN EXPANDED OFFERING

Nystrom has added a full-line of expansion joint compression seals including fire-rated, security (pick-resistant), chemical resistant, sound attenuation and more to our standard pre-compressed foam line. These new systems are:

- WATERTIGHT**
- NON-INVASIVE ANCHORING**
- THERMALLY INSULATING**
- UP TO 4X LABOR SAVINGS**
- COLOR COORDINATING**
- SOUND ATTENUATING**
- WAX FREE**
- EASY INSTALLATION**

### MODELS

MODEL	JOINT SIZES (INCHES)	TOTAL MOVEMENT	INSTALLATION	ADDED FEATURES	CATALOG PAGE
SES	0.5" to 12"	100%	Wall/Ceiling		5
PES	0.5" to 8"	50%	Wall/Ceiling	Hurricane Tough	6
SER	.5" to 1.25"	80%	Wall/Floor		7
HES	0.5" to 8"	100%	Floor		8
PDM	0.5" to 4"	55%	Deck		9
FES2/3	0.5" to 6"	100% or 50%	Wall/Ceiling	Fire-Rated UL Labeled	10
FHES2/3	0.5" to 4"	100% or 50%	Floor/Deck		11
PSES2	0.5" to 6"	100%	Wall	Fire-Rated UL Labeled	12
PHES2/3	0.5" to 4"	100% or 50%	Floor/Deck	Pick Resistant	13

Specialty Compression Seals also available.

Request your catalog at [www.Nystrom.com](http://www.Nystrom.com).

**SCAN THIS CODE**  
FOR MORE INFORMATION



# 1 AIA HSW CE Hour



## MANAGING BUILDING MOVEMENT WITH JOINTS

### COURSE CREDIT

Understanding building movement joints, forces, joint types, filler and cover options is an integral necessity.

Using this information will help assure that designs and specifications will achieve the desired success and prevent the deterioration that would otherwise occur in a building from movement.

Visit [www.Nystrom.com/Continuing-Education](http://www.Nystrom.com/Continuing-Education) for more info.

Visit [www.nystrom.com](http://www.nystrom.com) for the latest version of this document and more information.



9300 73rd Avenue North  
Minneapolis, MN 55428

Phone (800) 547-2635  
Fax (800) 317-8770

